



NATIONAL POWER CORPORATION

MinGen

PHILIPPINE BIDDING DOCUMENTS
(Procurement of INFRASTRUCTURE PROJECTS)

FOR

CONSTRUCTION OF SUBMARINE NET
BARRICADE AT AGUS 2 HEP

P.R. No.: MA-A2M22-059

Contracts Management Office
Logistics Division

Sixth Edition

July 2020

Rev. 2

TABLE OF CONTENTS

GLOSSARY OF.....	4
TERMS, ABBREVIATIONS, AND ACRONYMS	4
SECTION I. INVITATION TO BID.....	7
SECTION II. INSTRUCTIONS TO BIDDERS.....	11
1. Scope of Bid.....	12
2. Funding Information.....	12
3. Bidding Requirements	12
4. Corrupt, Fraudulent, Collusive, Coercive, and Obstructive Practices.....	12
5. Eligible Bidders	13
6. Origin of Associated Goods.....	13
7. Subcontracts.....	13
8. Pre-Bid Conference.....	14
9. Clarification and Amendment of Bidding Documents	13
10. Documents Comprising the Bid: Eligibility and Technical Components.....	14
11. Documents Comprising the Bid: Financial Component.....	15
12. Alternative Bids	15
13. Bid Prices.....	15
14. Bid and Payment Currencies.....	15
15. Bid Security	15
16. Sealing and Marking of Bids	15
17. Deadline for Submission of Bids.....	16
18. Opening and Preliminary Examination of Bids.....	16
19. Detailed Evaluation and Comparison of Bids.....	16
20. Post Qualification	16
21. Signing of the Contract.....	17
SECTION III. BID DATA SHEET.....	18
SECTION IV. GENERAL CONDITIONS OF CONTRACT.....	23
1. Scope of Contract.....	24
2. Sectional Completion of Works.....	24
3. Possession of Site.....	24
4. The Contractor's Obligations.....	24
5. Performance Security.....	25

6.	Site Investigation Reports.....	25
7.	Warranty	25
8.	Liability of the Contractor	25
9.	Termination for Other Causes.....	26
10.	Dayworks	26
11.	Program of Work.....	26
12.	Instructions, Inspections and Audits.....	26
13.	Advance Payment	26
14.	Progress Payments	27
15.	Operating and Maintenance Manuals	27
	SECTION V. SPECIAL CONDITIONS OF CONTRACT	28
	SECTION VI. SPECIFICATIONS.....	30
	SECTION VII. DRAWINGS.....	46
	SECTION VIII. BILL OF QUANTITIES.....	64
	SECTION IX. CHECKLIST OF TECHNICAL AND FINANCIAL DOCUMENTS	66
	FORM OF BID SECURITY (SURETY BOND).....	73
	CONTRACTOR'S ORGANIZATIONAL CHART FOR THE CONTRACT	76
	JOINT VENTURE AGREEMENT.....	90
	BID FORM	92
	SUMMARY SHEETS OF MATERIALS PRICES, LABOR RATES AND EQUIPMENT RENTAL RATES	95

Glossary of Terms, Abbreviations, and Acronyms

ABC – Approved Budget for the Contract.

ARCC – Allowable Range of Contract Cost.

BAC – Bids and Awards Committee.

Bid – A signed offer or proposal to undertake a contract submitted by a bidder in response to and in consonance with the requirements of the bidding documents. Also referred to as *Proposal and Tender*. (2016 revised IRR, Section 5[c])

Bidder – Refers to a contractor, manufacturer, supplier, distributor and/or consultant who submits a bid in response to the requirements of the Bidding Documents. (2016 revised IRR, Section 5[d])

Bidding Documents – The documents issued by the Procuring Entity as the bases for bids, furnishing all information necessary for a prospective bidder to prepare a bid for the Goods, Infrastructure Projects, and/or Consulting Services required by the Procuring Entity. (2016 revised IRR, Section 5[e])

BIR – Bureau of Internal Revenue,

BSP – Bangko Sentral ng Pilipinas.

CDA – Cooperative Development Authority.

Consulting Services – Refer to services for Infrastructure Projects and other types of projects or activities of the GOP requiring adequate external technical and professional expertise that are beyond the capability and/or capacity of the GOP to undertake such as, but not limited to: (i) advisory and review services; (ii) pre-investment or feasibility studies; (iii) design; (iv) construction supervision; (v) management and related services; and (vi) other technical services or special studies, (2016 revised IRR, Section 5[i])

Contract – Refers to the agreement entered into between the Procuring Entity and the Supplier or Manufacturer or Distributor or Service Provider for procurement of Goods and Services; Contractor for Procurement of Infrastructure Projects; or Consultant or Consulting Firm for Procurement of Consulting Services; as the case may be, as recorded in the Contract Form signed by the parties, including all attachments and appendices thereto and all documents incorporated by reference therein.

Contractor – is a natural or juridical entity whose proposal was accepted by the Procuring Entity and to whom the Contract to execute the Work was awarded. Contractor as used in these Bidding Documents may likewise refer to a supplier, distributor, manufacturer, or consultant.

CPI – Consumer Price Index.

DOLE – Department of Labor and Employment.

DTI – Department of Trade and Industry.

Foreign-funded Procurement or Foreign-Assisted Project – Refers to procurement whose funding source is from a foreign government, foreign or international financing institution as specified in the Treaty or International or Executive Agreement. (2016 revised IRR, Section 5[b]).

GFI – Government Financial Institution.

GOCC – Government-owned and/or –controlled corporation.

Goods – Refer to all items, supplies, materials and general support services, except Consulting Services and Infrastructure Projects, which may be needed in the transaction of public businesses or in the pursuit of any government undertaking, project or activity, whether in the nature of equipment, furniture, stationery, materials for construction, or personal property of any kind, including non-personal or contractual services such as the repair and maintenance of equipment and furniture, as well as trucking, hauling, janitorial, security, and related or analogous services, as well as procurement of materials and supplies provided by the Procuring Entity for such services. The term “related” or “analogous services” shall include, but is not limited to, lease or purchase of office space, media advertisements, health maintenance services, and other services essential to the operation of the Procuring Entity. (2016 revised IRR, Section 5[r])

GOP – Government of the Philippines.

Infrastructure Projects – Include the construction, improvement, rehabilitation, demolition, repair, restoration or maintenance of roads and bridges, railways, airports, seaports, communication facilities, civil works components of information technology projects, irrigation, flood control and drainage, water supply, sanitation, sewerage and solid waste management systems, shore protection, energy/power and electrification facilities, national buildings, school buildings, hospital buildings, and other related construction projects of the government. Also referred to as *civil works or works*. (2016 revised IRR, Section 5[u])

LGUs – Local Government Units.

NFCC – Net Financial Contracting Capacity.

NGA – National Government Agency.

PCAB – Philippine Contractors Accreditation Board.

PhilGEPS - Philippine Government Electronic Procurement System.

Procurement Project – refers to a specific or identified procurement covering goods, infrastructure project or consulting services. A Procurement Project shall be described, detailed, and scheduled in the Project Procurement Management Plan prepared by the agency which shall be consolidated in the procuring entity's Annual Procurement Plan. (GPPB Circular No. 06-2019 dated 17 July 2019)

PSA – Philippine Statistics Authority.

SEC – Securities and Exchange Commission.

SLCC – Single Largest Completed Contract.

UN – United Nations.

Section I. Invitation to Bid



NATIONAL POWER CORPORATION

MinGen

Invitation to Bid for *Construction of Submarine Net Barricade at Agus 2 HEP*

1. The *NATIONAL POWER CORPORATION-MINDANAO GENERATION*, through the *approved Corporate Budget of NPC for CY 2022* intends to apply the sum of *Seven Million Nine Hundred Ninety Nine Thousand Nine Hundred Ninety Nine and 94/100 Pesos (PHP7,999,999.94)* being the Approved Budget for the Contract (ABC) to payments under the contract for *Construction of Submarine Net Barricade at Agus 2 HEP, Pawak, Saguiaran, Lanao del Sur (INFRA2022-AG2-053)*. Bids received in excess of the ABC shall be automatically rejected at bid opening.
2. The *NATIONAL POWER CORPORATION-MINDANAO GENERATION* now invites bids for the above Procurement Project. Completion of the Works is required *Forty (40) calendar days*. Bidders should have completed a contract similar to the Project. The description of an eligible bidder is contained in the Bidding Documents, particularly, in Section II (Instructions to Bidders).
3. Bidding will be conducted through open competitive bidding procedures using non-discretionary *"pass/fail"* criterion as specified in the 2016 revised Implementing Rules and Regulations (IRR) of Republic Act (RA) No. 9184.
4. Interested bidders may obtain further information from *BAC Secretariat, NATIONAL POWER CORPORATION-MINDANAO GENERATION* and inspect the Bidding Documents at the address given below from *8:00 AM – 5:00 PM Monday to Friday*.
5. A complete set of Bidding Documents may be acquired by interested Bidders on *August 31 – September 19, 2022, 2022* from the given address and website(s) below and upon payment of the applicable fee for the Bidding Documents, pursuant to the latest Guidelines issued by the GPPB, in the amount of *Ten Thousand Pesos (PHP 10,000.00)*. The Procuring Entity shall allow the bidder to pay online and present its proof of payment for the fees in person, by facsimile, or through electronic means. For those prospective bidders who wish to pay online, below are the details of the account:

LandbankAccount name : NPC GENCO 5 COLLECTIONS FUND

LandbankAccount number : 0321-1689-14

It may also be downloaded free of charge from the website of the Philippine Government Electronic Procurement System (PhilGEPS) provided that Bidders shall pay the applicable fee for the Bidding Documents not later than the submission of their bids.

6. The *NATIONAL POWER CORPORATION-MINDANAO GENERATION* will hold a Pre-Bid Conference on *September 05, 2022 at 9:00 AM* at *Bidding Room, NPC-Mindanao Generation Headquarters, Maria Cristina, Iligan City* and/or through videoconferencing/webcasting via *ZOOM*, which shall be open to prospective bidders. Interested online attendees are required to pre-register one (1) day before the scheduled pre-bidding conference. For pre-registration, contact tel. no. (063)-222-3459 or email *logistics_afd_mingen@napocor.gov.ph*.
7. Bids must be duly received by the BAC Secretariat through manual submission at the office address as indicated below, on or before *September 19, 2022 at 9:30 AM*. Late bids shall not be accepted.
8. All bids must be accompanied by a bid security in any of the acceptable forms and in the amount stated in ITB Clause 15.
9. Bid opening shall be on *September 19, 2022 at 9:30 AM* at the *Bidding Room, NPC-Mindanao Generation Headquarters, Maria Cristina, Iligan City*. Bids will be opened in the presence of the bidders' representatives who choose to attend the activity.
10. *This project requires submission of at least:*
 - *Certificate of Site Inspection*
11. The *NATIONAL POWER CORPORATION- MINDANAO GENERATION* reserves the right to reject any and all bids, declare a failure of bidding, or not award the contract at any time prior to contract award in accordance with Sections 35.6 and 41 of the 2016 revised Implementing Rules and Regulations (IRR) of RA No. 9184, without thereby incurring any liability to the affected bidder or bidders.
12. For further information, please refer to:
BAC Secretariat
Contracts Management Office
Logistics Division
Mindanao Generation Headquarters
National Power Corporation
Maria Cristina, Iligan City
logistics_afd_mingen@napocor.gov.ph
Tel. No.: (063)222-3459
Fax No.: (063)223-8355/(063)223-4604
www.napocor.gov.ph

13. You may visit the following websites:

For downloading of Bidding Documents: <https://www.philgeps.gov.ph/> or
<https://www.napocor.gov.ph/BCSD/bids.php>



ATTY. ALEX E. MACABANGKIT
Vice Chairman, Bids and Awards Committee
Mindanao Generation Headquarters

Date of PhilGEPS Publication: 31 August 2022

**LIST OF PRIVATE SURETY COMPANIES ACCEPTABLE TO NPC
AS OF 11 NOVEMBER 2018**

	Name of Surety Company	Contact No.
1	ALPHA INSURANCE & SURETY CO., INC. Alpha Insurance Centre 1025 San Marcelino St., Ermita, Manila	625-1301 F - 522-6131
2	COMMONWEALTH INSURANCE COMPANY 10/12F, BDO Plaza, 8737 Paseo de Roxas Makati City	818-7626 loc 1253 813-2685
3	COUNTRY BANKERS INSURANCE CORPORATION Country Bankers Centre, 648 T. M. Kalaw Avenue Ermita, Manila	524-0621 to 23
4	INTRA STRATA ASSURANCE CORP. 8th Floor, 88 Corporate Center Building Sedeño cor. Valero St., Salcedo Vill, Makati City	817-3031 to 34
5	LIBERTY INSURANCE CORPORATION JCS Building, 119 Dela Rosa cor. Carlos Palanca Sts. Legaspi Village, Makati City	819-1961 to 66
6	PACIFIC UNION INSURANCE COMPANY Unit 2401 Antel Corporate Center 121 Valero St. Salcedo Village, Makati City	845-1033 to 37
7	PRUDENTIAL GUARANTEE & ASSURANCE, INC. Coyuito House, 119 Palanca St. Legaspi Village, Makati City	810-4916 to 35
8	STERLING INSURANCE COMPANY, INC. 6F Zeta Annex II Building 191 Salcedo St., Legaspi Village, Makati City	759-3082/759-2930/ 759-2921/ 892-3792
9	THE MERCANTILE INSURANCE CO. LTD. Mercantile Insurance Building Corner General Luna & Beaterio Sts. Intramuros, Manila	527-7701 to 20
10	TRAVELLERS INSURANCE SURETY CORPORATION 10 th Floor, G. E. Antonio Building T.M. Kalaw corner J. Bocobo St., Ermita, Manila	521-3822/400-9327
11	WESTERN GUARANTEE CORPORATION Suite 508 BPI Office Condominium Plaza Cervantes, Binondo, Manila	241-7401/242-1073

Note: Indicate in the performance, advance payment, retention and guarantee bond the following NPC Standard Terms & Conditions:

1) The bond is a penal bond, callable on demand and the entire amount thereof shall be forfeited in favor of the Obligor upon default of the Principal without the need to prove or to show grounds or reasons for demand for the sum specified therein;

2) The amount claimed by the Obligor under this bond shall be paid in full and shall never be subject to any adjustment by the Surety;

3) In case of claim, the Surety shall pay such claim within sixty (60) days from receipt by the Surety of the Obligor's notice of claim/demand letter notwithstanding any objection thereto by the Principal.

4) *The proposed bond is valid until the issuance of NRE of the Cert. of Final Acceptance.*

Section II. Instructions to Bidders

1. Scope of Bid

The Procuring Entity, **NATIONAL POWER CORPORATION-MINDANAO GENERATION** invites Bids for the *Construction of Submarine Net Barricade at Agus 2 HEP, with Project Identification Number INFRA2022-AG2-053.*

The Procurement Project (referred to herein as "Project") is for the construction of Works, as described in Section VI (Specifications).

2. Funding Information

- 2.1. The GOP through the source of funding as indicated below for CY 2022 in the amount of *Eight Million Pesos (P8,000,000.00).*
- 2.2. The source of funding is:
 - a. GOCC and GFIs, the proposed Corporate Operating Budget.

3. Bidding Requirements

The Bidding for the Project shall be governed by all the provisions of RA No. 9184 and its 2016 revised IRR, including its Generic Procurement Manual and associated policies, rules and regulations as the primary source thereof, while the herein clauses shall serve as the secondary source thereof.

Any amendments made to the IRR and other GPPB issuances shall be applicable only to the ongoing posting, advertisement, or invitation to bid by the BAC through the issuance of a supplemental or bid bulletin.

The Bidder, by the act of submitting its Bid, shall be deemed to have inspected the site, determined the general characteristics of the contracted Works and the conditions for this Project, such as the location and the nature of the work; (b) climatic conditions; (c) transportation facilities; (c) nature and condition of the terrain, geological conditions at the site communication facilities, requirements, location and availability of construction aggregates and other materials, labor, water, electric power and access roads; and (d) other factors that may affect the cost, duration and execution or implementation of the contract, project, or work and examine all instructions, forms, terms, and project requirements in the Bidding Documents.

4. Corrupt, Fraudulent, Collusive, Coercive, and Obstructive Practices

The Procuring Entity, as well as the Bidders and Contractors, shall observe the highest standard of ethics during the procurement and execution of the contract. They or through an agent shall not engage in corrupt, fraudulent, collusive, coercive, and obstructive practices defined under Annex "I" of the 2016 revised IRR of RA No. 9184 or other integrity violations in competing for the Project.

5. Eligible Bidders

- 5.1. Only Bids of Bidders found to be legally, technically, and financially capable will be evaluated.
- 5.2. The Bidder must have an experience of having completed a Single Largest Completed Contract (SLCC) that is similar to this Project, equivalent to at least fifty percent (50%) of the ABC adjusted, if necessary, by the Bidder to current prices using the PSA's CPI, except under conditions provided for in Section 23.4.2.4 of the 2016 revised IRR of RA No. 9184.

A contract is considered to be "similar" to the contract to be bid if it has the major categories of work stated in the BDS.

- 5.3. For Foreign-funded Procurement, the Procuring Entity and the foreign government/foreign or international financing institution may agree on another track record requirement, as specified in the Bidding Document prepared for this purpose.
- 5.4. The Bidders shall comply with the eligibility criteria under Section 23.4.2 of the 2016 IRR of RA No. 9184.

6. Origin of Associated Goods

There is no restriction on the origin of Goods other than those prohibited by a decision of the UN Security Council taken under Chapter VII of the Charter of the UN.

7. Subcontracts

- 7.1. The Bidder may subcontract portions of the Project to the extent allowed by the Procuring Entity as stated herein, but in no case more than fifty percent (50%) of the Project.

The Procuring Entity has prescribed that:

- a. Subcontracting is not allowed.

8. Pre-Bid Conference

The Procuring Entity will hold a pre-bid conference for this Project on the specified date and time and either at its physical address and/or through videoconferencing/webcasting as indicated in paragraph 6 of the IB.

9. Clarification and Amendment of Bidding Documents

Prospective bidders may request for clarification on and/or interpretation of any part of the Bidding Documents. Such requests must be in writing and received by the Procuring Entity, either at its given address or through electronic mail indicated in the IB, at least ten (10) calendar days before the deadline set for the submission and receipt of Bids.

10. Documents Comprising the Bid: Eligibility and Technical Components

- 10.1. The first envelope shall contain the eligibility and technical documents of the Bid as specified in **Section IX. Checklist of Technical and Financial Documents.**
- 10.2. If the eligibility requirements or statements, the bids, and all other documents for submission to the BAC are in foreign language other than English, it must be accompanied by a translation in English, which shall be authenticated by the appropriate Philippine foreign service establishment, post, or the equivalent office having jurisdiction over the foreign bidder's affairs in the Philippines. For Contracting Parties to the Apostille Convention, only the translated documents shall be authenticated through an apostille pursuant to GPPB Resolution No. 13-2019 dated 23 May 2019. The English translation shall govern, for purposes of interpretation of the bid.
- 10.3. A valid PCAB License is required, and in case of joint ventures, a valid special PCAB License, and registration for the type and cost of the contract for this Project. Any additional type of Contractor license or permit shall be indicated in the BDS.
- 10.4. A List of Contractor's key personnel (e.g., Project Manager, Project Engineers, Materials Engineers, and Foremen) assigned to the contract to be bid, with their complete qualification and experience data shall be provided. These key personnel must meet the required minimum years of experience set in the BDS.
- 10.5. A List of Contractor's major equipment units, which are owned, leased, and/or under purchase agreements, supported by proof of ownership, certification of availability of equipment from the equipment lessor/vendor for the duration of the project, as the case may be, must meet the minimum requirements for the contract set in the BDS.

11. Documents Comprising the Bid: Financial Component

- 11.1. The second bid envelope shall contain the financial documents for the Bid as specified in **Section IX. Checklist of Technical and Financial Documents.**
- 11.2. Any bid exceeding the ABC indicated in paragraph 1 of the IB shall not be accepted.
- 11.3. For Foreign-funded procurement, a ceiling may be applied to bid prices provided the conditions are met under Section 31.2 of the 2016 revised IRR of RA No. 9184.

12. Alternative Bids

Bidders shall submit offers that comply with the requirements of the Bidding Documents, including the basic technical design as indicated in the drawings and specifications. Unless there is a value engineering clause in the BDS, alternative Bids shall not be accepted.

13. Bid Prices

All bid prices for the given scope of work in the Project as awarded shall be considered as fixed prices, and therefore not subject to price escalation during contract implementation, except under extraordinary circumstances as determined by the NEDA and approved by the GPPB pursuant to the revised Guidelines for Contract Price Escalation guidelines.

14. Bid and Payment Currencies

14.1. Bid prices may be quoted in the local currency or tradeable currency accepted by the BSP at the discretion of the Bidder. However, for purposes of bid evaluation, Bids denominated in foreign currencies shall be converted to Philippine currency based on the exchange rate as published in the BSP reference rate bulletin on the day of the bid opening.

14.2. *Payment of the contract price shall be made in:*

- a. Philippine Pesos.

15. Bid Security

15.1. The Bidder shall submit a Bid Securing Declaration or any form of Bid Security in the amount indicated in the BDS, which shall be not less than the percentage of the ABC in accordance with the schedule in the BDS.

15.2. The Bid and bid security shall be valid until *One Hundred Twenty (120) Calendar Days from the Scheduled Bid Opening*. Any bid not accompanied by an acceptable bid security shall be rejected by the Procuring Entity as non-responsive.

16. Sealing and Marking of Bids

Each Bidder shall submit one copy of the first and second components of its Bid.

The Procuring Entity may request additional hard copies and/or electronic copies of the Bid. However, failure of the Bidders to comply with the said request shall not be a ground for disqualification.

If the Procuring Entity allows the submission of bids through online submission to the given website or any other electronic means, the Bidder shall submit an electronic copy of its Bid, which must be digitally signed. An electronic copy that cannot be

opened or is corrupted shall be considered non-responsive and, thus, automatically disqualified.

17. Deadline for Submission of Bids

The Bidders shall submit on the specified date and time and either at its physical address or through online submission as indicated in paragraph 7 of the IB.

18. Opening and Preliminary Examination of Bids

18.1. The BAC shall open the Bids in public at the time, on the date, and at the place specified in paragraph 9 of the IB. The Bidders' representatives who are present shall sign a register evidencing their attendance. In case videoconferencing, webcasting or other similar technologies will be used, attendance of participants shall likewise be recorded by the BAC Secretariat.

In case the Bids cannot be opened as scheduled due to justifiable reasons, the rescheduling requirements under Section 29 of the 2016 revised IRR of RA No. 9184 shall prevail.

18.2. The preliminary examination of Bids shall be governed by Section 30 of the 2016 revised IRR of RA No. 9184.

19. Detailed Evaluation and Comparison of Bids

19.1. The Procuring Entity's BAC shall immediately conduct a detailed evaluation of all Bids rated "*passed*" using non-discretionary pass/fail criteria. The BAC shall consider the conditions in the evaluation of Bids under Section 32.2 of 2016 revised IRR of RA No. 9184.

19.2. If the Project allows partial bids, all Bids and combinations of Bids as indicated in the BDS shall be received by the same deadline and opened and evaluated simultaneously so as to determine the Bid or combination of Bids offering the lowest calculated cost to the Procuring Entity. Bid Security as required by ITB Clause 16 shall be submitted for each contract (lot) separately.

19.3. In all cases, the NFCC computation pursuant to Section 23.4.2.6 of the 2016 revised IRR of RA No. 9184 must be sufficient for the total of the ABCs for all the lots participated in by the prospective Bidder.

20. Post Qualification

Within a non-extendible period of five (5) calendar days from receipt by the Bidder of the notice from the BAC that it submitted the Lowest Calculated Bid, the Bidder shall submit its latest income and business tax returns filed and paid through the BIR Electronic Filing and Payment System (eFPS), and other appropriate licenses and permits required by law and stated in the BDS.

21. Signing of the Contract

The documents required in Section 37.2 of the 2016 revised IRR of RA No. 9184 shall form part of the Contract. Additional Contract documents are indicated in the **BDS**.

Section III. Bid Data Sheet

Bid Data Sheet

ITB Clause			
5.2	For this purpose, contracts similar to the Project refer to contracts which have the same major categories of work, which shall be: Vertical Structure		
7.1	Subcontracting is not allowed.		
10.3	None		
10.4	The key personnel must meet the required minimum years of experience set below:		
	<u>Key Personnel</u>	<u>General Expertise</u>	<u>Relevant Experience</u>
	1 - Project Engineer	Licensed Civil Engineer	At least five (5) years experience in related works
	1 - Construction Foreman	B.S. Civil Engineering Graduate	At least three (3) years experience in similar works
		Civil Engineering Technology Graduate	At least five (5) years experience in similar works
		Non-graduate	At least five (5) years working experience as Construction Foreman in similar works
	1 - Construction Safety and Health Officer (SO2)	Construction Safety Officer 2	At least forty (40) hours of Construction Safety and Health (COSH) Training from Occupational Safety and Health Center (OSHC) or Safety Training Organizations (STOs) accredited by the Department of Labor and Employment (DOLE). Must be present during the whole duration of the project)
	3 - Welder	NC II	At least three (3) years experience in welding/cutting works

	<p>1 - Electrician NC II At least three (3) years experience in electrical works</p> <p>(1) Valid Professional Regulation Commission (PRC) license for professional personnel; (2) Certificate of Training with accreditation from DOLE for the Construction Safety & Health Officer; (3) TESDA Training Certificate (NC II) of Welders, Electrician ; and (4) Diploma and/or Service Record/Certificate of Employment of previous and/or current employer for Project Engineer, SO2, Construction Foreman, Welders, Electrician & Plumber, etc. to support for their years of work experience <i>shall be submitted and included as an attachment in the Standard Form NPCMGNSF-INFR-05: List of Key personnel Proposed to be Assigned to the Contract.</i></p> <p>Project Engineer or Foreman and Construction Safety & Health Officer maybe one person, as long as he meets the requirements of the two positions. Provided however, that there is no overlapping of projects undertaken by the same contractor and supervised by the same person.</p> <p>The above key personnel must be either employed by the applicant or contracted by the applicant to be employed for the contract to be bid.</p>																														
10.5	<p>The minimum major equipment requirements are the following:</p> <table border="1" data-bbox="411 1041 1364 1579"> <thead> <tr> <th>Equipment</th> <th>Capacity</th> <th>Number of Units</th> </tr> </thead> <tbody> <tr> <td>Mini-Backhoe with Jackhammer Wheel Mounted</td> <td>0.8 cu.m.</td> <td>One (1)</td> </tr> <tr> <td>Plate Compactor</td> <td>5 HP</td> <td>One (1)</td> </tr> <tr> <td>Concrete Vibrator, Pen Type</td> <td>4 HP</td> <td>Two (2)</td> </tr> <tr> <td>Welding Machine</td> <td>300 Amp.</td> <td>Three (3)</td> </tr> <tr> <td>Concrete Saw/Cutter</td> <td>7 HP</td> <td>One (1)</td> </tr> <tr> <td>Concrete Transit Mixer</td> <td>5-6 cu.yd.</td> <td>One (1)</td> </tr> <tr> <td>Pumperete</td> <td>30 cu.m/h</td> <td>One (1)</td> </tr> <tr> <td>Water Pump</td> <td>100mm dia. suction, 2667 lpm</td> <td>One (1)</td> </tr> <tr> <td>Crane Truck Mounted</td> <td>20-25 mt with drop hammer</td> <td>One (1)</td> </tr> </tbody> </table>	Equipment	Capacity	Number of Units	Mini-Backhoe with Jackhammer Wheel Mounted	0.8 cu.m.	One (1)	Plate Compactor	5 HP	One (1)	Concrete Vibrator, Pen Type	4 HP	Two (2)	Welding Machine	300 Amp.	Three (3)	Concrete Saw/Cutter	7 HP	One (1)	Concrete Transit Mixer	5-6 cu.yd.	One (1)	Pumperete	30 cu.m/h	One (1)	Water Pump	100mm dia. suction, 2667 lpm	One (1)	Crane Truck Mounted	20-25 mt with drop hammer	One (1)
Equipment	Capacity	Number of Units																													
Mini-Backhoe with Jackhammer Wheel Mounted	0.8 cu.m.	One (1)																													
Plate Compactor	5 HP	One (1)																													
Concrete Vibrator, Pen Type	4 HP	Two (2)																													
Welding Machine	300 Amp.	Three (3)																													
Concrete Saw/Cutter	7 HP	One (1)																													
Concrete Transit Mixer	5-6 cu.yd.	One (1)																													
Pumperete	30 cu.m/h	One (1)																													
Water Pump	100mm dia. suction, 2667 lpm	One (1)																													
Crane Truck Mounted	20-25 mt with drop hammer	One (1)																													
12	N/A																														
15.1	<p>The bid security shall be in the form of a Bid Securing Declaration or any of the following forms and amounts:</p> <p>a. The amount of not less than PHP160,000.00(2% of ABC), if bid security is in cash, cashier's/manager's check, bank draft/guarantee or irrevocable letter of credit;</p> <p>b. The amount of not less than PHP400,000.00(5% of ABC), if bid security</p>																														

	is in Surety Bond.
19.2	Partial bids are allowed, as follows:
20	<p>Additional documents to be submitted during Post-Qualification:</p> <ol style="list-style-type: none"> 1. Other appropriate licenses and permits required by law and stated in the Bidding documents. <ol style="list-style-type: none"> a. <i>Original Bank Statement year ending prior to bid opening;</i> b. <i>Valid and updated PhilGEPs Registration (Platinum Membership)(all pages);</i> c. <i>Registration Certificate from Securities and Exchange Commission (SEC), Department of Trade and Industry (DTI) for sole proprietorship, or Cooperative Development Authority (CDA) for cooperatives or its equivalent document;</i> d. <i>Mayor's or Business permit issued by the city or municipality where the principal place of business of the prospective bidder is located, or the equivalent document for Exclusive Economic Zones or Areas;</i> e. <i>Valid Tax clearance per E.O. No. 398, s. 2005, as finally reviewed and approved by the Bureau of Internal Revenue (BIR). Quarterly Income Tax Returns filed and paid through the BIR Electronic Filing and Payment System (eFPS);</i> f. <i>The prospective bidder's audited financial statements, showing, among others, the prospective bidder's total and current assets and liabilities, stamped "received" by the BIR or its duly accredited and authorized institutions, for the preceding calendar year which should not be earlier than two (2) years from the date of bid submission;</i> g. <i>Philippine Contractors Accreditation Board (PCAB) License;</i> h. <i>Board of Accountancy (BOA) Certificate;</i> 2. <i>Contract and/or Notice of Award as supporting documents for NPC MinGen Form No. NPCMGNSF-INFR-01, if applicable;</i> 3. (a) <i>Valid Professional Regulation Commission (PRC) license for professional personnel;</i> (b) <i>Certificate of Training with accreditation from DOLE for the Construction Safety & Health Officer;</i> (c) <i>TESDA Training Certificate (NC II) of Welders or Electrician;</i> and (d) <i>Diploma and/or Service Record/Certificate of Employment of previous and/or current employer for Construction Foreman, Welders, Electrician & Plumber - as supporting documents for NPC MinGen Form No. NPCMGNSF-INFR-05, if applicable.</i> 4. <i>Certificate of Site Inspection issued by Plant/Department Manager or his authorized representative.</i>
21	<p>Additional contract documents relevant to the Project that may be required by existing laws and/or the Procuring Entity, <u>prior to contract signing</u>, such as:</p> <ol style="list-style-type: none"> a) Approved construction schedule and S-curve b) Approved manpower schedule c) Construction methods

	<ul style="list-style-type: none">d) Approved equipment utilization schedulee) Construction safety and health program approved by the DOLEf) Approved Project Evaluation Review Technique/Critical Path Method (PERT/CPM)
--	---

Section IV. General Conditions of Contract

1. Scope of Contract

This Contract shall include all such items, although not specifically mentioned, that can be reasonably inferred as being required for its completion as if such items were expressly mentioned herein. All the provisions of RA No. 9184 and its 2016 revised IRR, including the Generic Procurement Manual, and associated issuances, constitute the primary source for the terms and conditions of the Contract, and thus, applicable in contract implementation. Herein clauses shall serve as the secondary source for the terms and conditions of the Contract.

This is without prejudice to Sections 74.1 and 74.2 of the 2016 revised IRR of RA No. 9184 allowing the GPPB to amend the IRR, which shall be applied to all procurement activities, the advertisement, posting, or invitation of which were issued after the effectivity of the said amendment.

2. Sectional Completion of Works

If sectional completion is specified in the Special Conditions of Contract (SCC), references in the Conditions of Contract to the Works, the Completion Date, and the Intended Completion Date shall apply to any Section of the Works (other than references to the Completion Date and Intended Completion Date for the whole of the Works).

3. Possession of Site

- 4.1. The Procuring Entity shall give possession of all or parts of the Site to the Contractor based on the schedule of delivery indicated in the SCC, which corresponds to the execution of the Works. If the Contractor suffers delay or incurs cost from failure on the part of the Procuring Entity to give possession in accordance with the terms of this clause, the Procuring Entity's Representative shall give the Contractor a Contract Time Extension and certify such sum as fair to cover the cost incurred, which sum shall be paid by Procuring Entity.
- 4.2. If possession of a portion is not given by the above date, the Procuring Entity will be deemed to have delayed the start of the relevant activities. The resulting adjustments in contract time to address such delay may be addressed through contract extension provided under Annex "E" of the 2016 revised IRR of RA No. 9184.

4. The Contractor's Obligations

The Contractor shall employ the key personnel named in the Schedule of Key Personnel indicating their designation, in accordance with ITB Clause 10.3 and specified in the BDS, to carry out the supervision of the Works.

The Procuring Entity will approve any proposed replacement of key personnel only if their relevant qualifications and abilities are equal to or better than those of the personnel listed in the Schedule.

5. Performance Security

- 5.1. Within ten (10) calendar days from receipt of the Notice of Award from the Procuring Entity but in no case later than the signing of the contract by both parties, the successful Bidder shall furnish the performance security in any of the forms prescribed in Section 39 of the 2016 revised IRR.
- 5.2. The Contractor, by entering into the Contract with the Procuring Entity, acknowledges the right of the Procuring Entity to institute action pursuant to RA No. 3688 against any subcontractor be they an individual, firm, partnership, corporation, or association supplying the Contractor with labor, materials and/or equipment for the performance of this Contract.

6. Site Investigation Reports

The Contractor, in preparing the Bid, shall rely on any Site Investigation Reports referred to in the SCC supplemented by any information obtained by the Contractor.

7. Warranty

- 7.1. In case the Contractor fails to undertake the repair works under Section 62.2.2 of the 2016 revised IRR, the Procuring Entity shall forfeit its performance security, subject its property(ies) to attachment or garnishment proceedings, and perpetually disqualify it from participating in any public bidding. All payables of the GOP in his favor shall be offset to recover the costs.
- 7.2. The warranty against Structural Defects/Failures, except that occasioned-on force majeure, shall cover the period from the date of issuance of the Certificate of Final Acceptance by the Procuring Entity. Specific duration of the warranty is found in the SCC.

8. Liability of the Contractor

Subject to additional provisions, if any, set forth in the SCC, the Contractor's liability under this Contract shall be as provided by the laws of the Republic of the Philippines.

If the Contractor is a joint venture, all partners to the joint venture shall be jointly and severally liable to the Procuring Entity.

9. Termination for Other Causes

Contract termination shall be initiated in case it is determined *prima facie* by the Procuring Entity that the Contractor has engaged, before, or during the implementation of the contract, in unlawful deeds and behaviors relative to contract acquisition and implementation, such as, but not limited to corrupt, fraudulent, collusive, coercive, and obstructive practices as stated in ITB Clause 4.

10. Dayworks

Subject to the guidelines on Variation Order in Annex "E" of the 2016 revised IRR of RA No. 9184, and if applicable as indicated in the SCC, the Dayworks rates in the Contractor's Bid shall be used for small additional amounts of work only when the Procuring Entity's Representative has given written instructions in advance for additional work to be paid for in that way.

11. Program of Work

- 11.1. The Contractor shall submit to the Procuring Entity's Representative for approval the said Program of Work showing the general methods, arrangements, order, and timing for all the activities in the Works. The submissions of the Program of Work are indicated in the SCC.
- 11.2. The Contractor shall submit to the Procuring Entity's Representative for approval an updated Program of Work at intervals no longer than the period stated in the SCC. If the Contractor does not submit an updated Program of Work within this period, the Procuring Entity's Representative may withhold the amount stated in the SCC from the next payment certificate and continue to withhold this amount until the next payment after the date on which the overdue Program of Work has been submitted.

12. Instructions, Inspections and Audits

The Contractor shall permit the GOP or the Procuring Entity to inspect the Contractor's accounts and records relating to the performance of the Contractor and to have them audited by auditors of the GOP or the Procuring Entity, as may be required.

13. Advance Payment

The Procuring Entity shall, upon a written request of the Contractor which shall be submitted as a Contract document, make an advance payment to the Contractor in an amount not exceeding fifteen percent (15%) of the total contract price, to be made in lump sum, or at the most two installments according to a schedule specified in the SCC, subject to the requirements in Annex "E" of the 2016 revised IRR of RA No. 9184.

14. Progress Payments

The Contractor may submit a request for payment for Work accomplished. Such requests for payment shall be verified and certified by the Procuring Entity's Representative/Project Engineer. Except as otherwise stipulated in the SCC, materials and equipment delivered on the site but not completely put in place shall not be included for payment.

15. Operating and Maintenance Manuals

- 15.1. If required, the Contractor will provide "as built" Drawings and/or operating and maintenance manuals as specified in the SCC.
- 15.2. If the Contractor does not provide the Drawings and/or manuals by the dates stated above, or they do not receive the Procuring Entity's Representative's approval, the Procuring Entity's Representative may withhold the amount stated in the SCC from payments due to the Contractor.

Section V. Special Conditions of Contract

Special Conditions of Contract

GCC Clause	
2	Sectional completion is not specified.
4.1	The Procuring Entity shall give possession of the Site to the Contractor <i>on the start date.</i>
6	The site investigation reports are: NONE
7.2	Fifteen (15) years
10	Day works are not applicable to the contract.
11.1	The Contractor shall submit the Program of Work to the Procuring Entity's Representative <u>upon contract signing</u> or within <u>three (3) days</u> of delivery of the Notice of Award.
11.2	The amount to be withheld for late submission of an updated Program of Work is Fifty (50) % of the billed amount. The updating of Program of Work shall be done bi-monthly.
13	The amount of the advance payment is 15% of contract amount and paid in lump sum.
14	No further instruction.
15.1	The date by which operating and maintenance manuals are required is upon completion of the project. The date by which "as built" drawings are required is upon completion of the project.
15.2	The amount to be withheld for failing to produce "as built" drawings and/or operating and maintenance manuals by the date required is one hundred percent (100%) of the final billing.

Section VI. Specifications

Section II. Instructions to Bidders

1. Scope of Bid

The Procuring Entity, **NATIONAL POWER CORPORATION-MINDANAO GENERATION** invites Bids for the *Construction of Submarine Net Barricade at Agus 2 HEP, with Project Identification Number INFRA2022-AG2-053.*

The Procurement Project (referred to herein as "Project") is for the construction of Works, as described in Section VI (Specifications).

2. Funding Information

2.1. The GOP through the source of funding as indicated below for CY 2022 in the amount of *Eight Million Pesos (PHP8,000,000.00).*

2.2. The source of funding is:

- a. GOCC and GFIs, the proposed Corporate Operating Budget.

3. Bidding Requirements

The Bidding for the Project shall be governed by all the provisions of RA No. 9184 and its 2016 revised IRR, including its Generic Procurement Manual and associated policies, rules and regulations as the primary source thereof, while the herein clauses shall serve as the secondary source thereof.

Any amendments made to the IRR and other GPPB issuances shall be applicable only to the ongoing posting, advertisement, or invitation to bid by the BAC through the issuance of a supplemental or bid bulletin.

The Bidder, by the act of submitting its Bid, shall be deemed to have inspected the site, determined the general characteristics of the contracted Works and the conditions for this Project, such as the location and the nature of the work; (b) climatic conditions; (c) transportation facilities; (e) nature and condition of the terrain, geological conditions at the site communication facilities, requirements, location and availability of construction aggregates and other materials, labor, water, electric power and access roads; and (d) other factors that may affect the cost, duration and execution or implementation of the contract, project, or work and examine all instructions, forms, terms, and project requirements in the Bidding Documents.

4. Corrupt, Fraudulent, Collusive, Coercive, and Obstructive Practices

The Procuring Entity, as well as the Bidders and Contractors, shall observe the highest standard of ethics during the procurement and execution of the contract. They or through an agent shall not engage in corrupt, fraudulent, collusive, coercive, and obstructive practices defined under Annex "I" of the 2016 revised IRR of RA No. 9184 or other integrity violations in competing for the Project.

5. Eligible Bidders

- 5.1. Only Bids of Bidders found to be legally, technically, and financially capable will be evaluated.
- 5.2. The Bidder must have an experience of having completed a Single Largest Completed Contract (SLCC) that is similar to this Project, equivalent to at least fifty percent (50%) of the ABC adjusted, if necessary, by the Bidder to current prices using the PSA's CPI, except under conditions provided for in Section 23.4.2.4 of the 2016 revised IRR of RA No. 9184.

A contract is considered to be "similar" to the contract to be bid if it has the major categories of work stated in the BDS.
- 5.3. For Foreign-funded Procurement, the Procuring Entity and the foreign government/foreign or international financing institution may agree on another track record requirement, as specified in the Bidding Document prepared for this purpose.
- 5.4. The Bidders shall comply with the eligibility criteria under Section 23.4.2 of the 2016 IRR of RA No. 9184.

6. Origin of Associated Goods

There is no restriction on the origin of Goods other than those prohibited by a decision of the UN Security Council taken under Chapter VII of the Charter of the UN.

7. Subcontracts

- 7.1. The Bidder may subcontract portions of the Project to the extent allowed by the Procuring Entity as stated herein, but in no case more than fifty percent (50%) of the Project.

The Procuring Entity has prescribed that:

- a. Subcontracting is not allowed.

8. Pre-Bid Conference

The Procuring Entity will hold a pre-bid conference for this Project on the specified date and time and either at its physical address and/or through videoconferencing/webcasting as indicated in paragraph 6 of the IB.

9. Clarification and Amendment of Bidding Documents

Prospective bidders may request for clarification on and/or interpretation of any part of the Bidding Documents. Such requests must be in writing and received by the Procuring Entity, either at its given address or through electronic mail indicated in the IB, at least ten (10) calendar days before the deadline set for the submission and receipt of Bids.

10. Documents Comprising the Bid: Eligibility and Technical Components

- 10.1. The first envelope shall contain the eligibility and technical documents of the Bid as specified in **Section IX. Checklist of Technical and Financial Documents.**
- 10.2. If the eligibility requirements or statements, the bids, and all other documents for submission to the BAC are in foreign language other than English, it must be accompanied by a translation in English, which shall be authenticated by the appropriate Philippine foreign service establishment, post, or the equivalent office having jurisdiction over the foreign bidder's affairs in the Philippines. For Contracting Parties to the Apostille Convention, only the translated documents shall be authenticated through an apostille pursuant to GPPB Resolution No. 13-2019 dated 23 May 2019. The English translation shall govern, for purposes of interpretation of the bid.
- 10.3. A valid PCAB License is required, and in case of joint ventures, a valid special PCAB License, and registration for the type and cost of the contract for this Project. Any additional type of Contractor license or permit shall be indicated in the BDS.
- 10.4. A List of Contractor's key personnel (e.g., Project Manager, Project Engineers, Materials Engineers, and Foremen) assigned to the contract to be bid, with their complete qualification and experience data shall be provided. These key personnel must meet the required minimum years of experience set in the BDS.
- 10.5. A List of Contractor's major equipment units, which are owned, leased, and/or under purchase agreements, supported by proof of ownership, certification of availability of equipment from the equipment lessor/vendor for the duration of the project, as the case may be, must meet the minimum requirements for the contract set in the BDS.

11. Documents Comprising the Bid: Financial Component

- 11.1. The second bid envelope shall contain the financial documents for the Bid as specified in **Section IX. Checklist of Technical and Financial Documents.**
- 11.2. Any bid exceeding the ABC indicated in paragraph 1 of the IB shall not be accepted.
- 11.3. For Foreign-funded procurement, a ceiling may be applied to bid prices provided the conditions are met under Section 31.2 of the 2016 revised IRR of RA No. 9184.

12. Alternative Bids

Bidders shall submit offers that comply with the requirements of the Bidding Documents, including the basic technical design as indicated in the drawings and specifications. Unless there is a value engineering clause in the BDS, alternative Bids shall not be accepted.

13. Bid Prices

All bid prices for the given scope of work in the Project as awarded shall be considered as fixed prices, and therefore not subject to price escalation during contract implementation, except under extraordinary circumstances as determined by the NEDA and approved by the GPPB pursuant to the revised Guidelines for Contract Price Escalation guidelines.

14. Bid and Payment Currencies

14.1. Bid prices may be quoted in the local currency or tradeable currency accepted by the BSP at the discretion of the Bidder. However, for purposes of bid evaluation, Bids denominated in foreign currencies shall be converted to Philippine currency based on the exchange rate as published in the BSP reference rate bulletin on the day of the bid opening.

14.2. *Payment of the contract price shall be made in:*

- a. Philippine Pesos,

15. Bid Security

15.1. The Bidder shall submit a Bid Securing Declaration or any form of Bid Security in the amount indicated in the BDS, which shall be not less than the percentage of the ABC in accordance with the schedule in the BDS.

15.2. The Bid and bid security shall be valid until *One Hundred Twenty (120) Calendar Days from the Scheduled Bid Opening*. Any bid not accompanied by an acceptable bid security shall be rejected by the Procuring Entity as non-responsive.

16. Scaling and Marking of Bids

Each Bidder shall submit one copy of the first and second components of its Bid.

The Procuring Entity may request additional hard copies and/or electronic copies of the Bid. However, failure of the Bidders to comply with the said request shall not be a ground for disqualification.

If the Procuring Entity allows the submission of bids through online submission to the given website or any other electronic means, the Bidder shall submit an electronic copy of its Bid, which must be digitally signed. An electronic copy that cannot be

opened or is corrupted shall be considered non-responsive and, thus, automatically disqualified.

17. Deadline for Submission of Bids

The Bidders shall submit on the specified date and time and either at its physical address or through online submission as indicated in paragraph 7 of the IB.

18. Opening and Preliminary Examination of Bids

18.1. The BAC shall open the Bids in public at the time, on the date, and at the place specified in paragraph 9 of the IB. The Bidders' representatives who are present shall sign a register evidencing their attendance. In case videoconferencing, webcasting or other similar technologies will be used, attendance of participants shall likewise be recorded by the BAC Secretariat.

In case the Bids cannot be opened as scheduled due to justifiable reasons, the rescheduling requirements under Section 29 of the 2016 revised IRR of RA No. 9184 shall prevail.

18.2. The preliminary examination of Bids shall be governed by Section 30 of the 2016 revised IRR of RA No. 9184.

19. Detailed Evaluation and Comparison of Bids

19.1. The Procuring Entity's BAC shall immediately conduct a detailed evaluation of all Bids rated "*passed*" using non-discretionary pass/fail criteria. The BAC shall consider the conditions in the evaluation of Bids under Section 32.2 of 2016 revised IRR of RA No. 9184.

19.2. If the Project allows partial bids, all Bids and combinations of Bids as indicated in the BDS shall be received by the same deadline and opened and evaluated simultaneously so as to determine the Bid or combination of Bids offering the lowest calculated cost to the Procuring Entity. Bid Security as required by ITB Clause 16 shall be submitted for each contract (lot) separately.

19.3. In all cases, the NFCC computation pursuant to Section 23.4.2.6 of the 2016 revised IRR of RA No. 9184 must be sufficient for the total of the ABCs for all the lots participated in by the prospective Bidder.

20. Post Qualification

Within a non-extendible period of five (5) calendar days from receipt by the Bidder of the notice from the BAC that it submitted the Lowest Calculated Bid, the Bidder shall submit its latest income and business tax returns filed and paid through the BIR Electronic Filing and Payment System (eFPS), and other appropriate licenses and permits required by law and stated in the BDS.

21. Signing of the Contract

The documents required in Section 37.2 of the 2016 revised IRR of RA No. 9184 shall form part of the Contract. Additional Contract documents are indicated in the BDS.

Section III. Bid Data Sheet

Bid Data Sheet

ITB Clause			
5.2	For this purpose, contracts similar to the Project refer to contracts which have the same major categories of work, which shall be: Vertical Structure		
7.1	Subcontracting is not allowed.		
10.3	None		
10.4	The key personnel must meet the required minimum years of experience set below:		
	<u>Key Personnel</u>	<u>General Expertise</u>	<u>Relevant Experience</u>
	1 - Project Engineer	Licensed Civil Engineer	At least five (5) years experience in related works
	1 - Construction Foreman	B.S. Civil Engineering Graduate	At least three (3) years experience in similar works
		Civil Engineering Technology Graduate	At least five (5) years experience in similar works
		Non-graduate	At least five (5) years working experience as Construction Foreman in similar works
	1 - Construction Safety and Health Officer (SO2)	Construction Safety Officer 2	At least forty (40) hours of Construction Safety and Health (COSH) Training from Occupational Safety and Health Center (OSHC) or Safety Training Organizations (STOs) accredited by the Department of Labor and Employment (DOLE). Must be present during the whole duration of the project)
	3 - Welder	NC II	At least three (3) years experience in welding/cutting works

	<p>1 - Electrician NC II At least three (3) years experience in electrical works</p> <p>(1) Valid Professional Regulation Commission (PRC) license for professional personnel; (2) Certificate of Training with accreditation from DOLE for the Construction Safety & Health Officer; (3) TESDA Training Certificate (NC II) of Welders, Electrician ; and (4) Diploma and/or Service Record/Certificate of Employment of previous and/or current employer for Project Engineer, SO2, Construction Foreman, Welders, Electrician & Plumber, etc. to support for their years of work experience <i>shall be submitted and included as an attachment in the Standard Form NPCMGNSF-INFR-05: List of Key personnel Proposed to be Assigned to the Contract.</i></p> <p>Project Engineer or Foreman and Construction Safety & Health Officer maybe one person, as long as he meets the requirements of the two positions. Provided however, that there is no overlapping of projects undertaken by the same contractor and supervised by the same person.</p> <p>The above key personnel must be either employed by the applicant or contracted by the applicant to be employed for the contract to be bid.</p>																														
10.5	<p>The minimum major equipment requirements are the following:</p> <table border="1" data-bbox="411 1041 1364 1568"> <thead> <tr> <th><u>Equipment</u></th> <th><u>Capacity</u></th> <th><u>Number of Units</u></th> </tr> </thead> <tbody> <tr> <td>Mini-Backhoe with Jackhammer Wheel Mounted</td> <td>0.8 cu.m.</td> <td>One (1)</td> </tr> <tr> <td>Plate Compactor</td> <td>5 HP</td> <td>One (1)</td> </tr> <tr> <td>Concrete Vibrator, Pen Type</td> <td>4 HP</td> <td>Two (2)</td> </tr> <tr> <td>Welding Machine</td> <td>300 Amp.</td> <td>Three (3)</td> </tr> <tr> <td>Concrete Saw/Cutter</td> <td>7 HP</td> <td>One (1)</td> </tr> <tr> <td>Concrete Transit Mixer</td> <td>5-6 cu.yd.</td> <td>One (1)</td> </tr> <tr> <td>Pumpcrete</td> <td>30 cu.m/h</td> <td>One (1)</td> </tr> <tr> <td>Water Pump</td> <td>100mm dia. suction, 2667 lpm</td> <td>One (1)</td> </tr> <tr> <td>Crane Truck Mounted</td> <td>20-25 mt with drop hammer</td> <td>One (1)</td> </tr> </tbody> </table>	<u>Equipment</u>	<u>Capacity</u>	<u>Number of Units</u>	Mini-Backhoe with Jackhammer Wheel Mounted	0.8 cu.m.	One (1)	Plate Compactor	5 HP	One (1)	Concrete Vibrator, Pen Type	4 HP	Two (2)	Welding Machine	300 Amp.	Three (3)	Concrete Saw/Cutter	7 HP	One (1)	Concrete Transit Mixer	5-6 cu.yd.	One (1)	Pumpcrete	30 cu.m/h	One (1)	Water Pump	100mm dia. suction, 2667 lpm	One (1)	Crane Truck Mounted	20-25 mt with drop hammer	One (1)
<u>Equipment</u>	<u>Capacity</u>	<u>Number of Units</u>																													
Mini-Backhoe with Jackhammer Wheel Mounted	0.8 cu.m.	One (1)																													
Plate Compactor	5 HP	One (1)																													
Concrete Vibrator, Pen Type	4 HP	Two (2)																													
Welding Machine	300 Amp.	Three (3)																													
Concrete Saw/Cutter	7 HP	One (1)																													
Concrete Transit Mixer	5-6 cu.yd.	One (1)																													
Pumpcrete	30 cu.m/h	One (1)																													
Water Pump	100mm dia. suction, 2667 lpm	One (1)																													
Crane Truck Mounted	20-25 mt with drop hammer	One (1)																													
12	N/A																														
15.1	<p>The bid security shall be in the form of a Bid Securing Declaration or any of the following forms and amounts:</p> <p>a. The amount of not less than PHP160,000.00(2% of ABC), if bid security is in cash, cashier's/manager's check, bank draft/guarantee or irrevocable letter of credit;</p> <p>b. The amount of not less than PHP400,000.00(5% of ABC), if bid security</p>																														

	is in Surety Bond.
19.2	Partial bids are allowed, as follows:
20	<p>Additional documents to be submitted during Post-Qualification:</p> <ol style="list-style-type: none"> 1. Other appropriate licenses and permits required by law and stated in the Bidding documents. <ol style="list-style-type: none"> a. <i>Original Bank Statement year ending prior to bid opening;</i> b. <i>Valid and updated PhilGEPS Registration (Platinum Membership)(all pages);</i> c. <i>Registration Certificate from Securities and Exchange Commission (SEC), Department of Trade and Industry (DTI) for sole proprietorship, or Cooperative Development Authority (CDA) for cooperatives or its equivalent document;</i> d. <i>Mayor's or Business permit issued by the city or municipality where the principal place of business of the prospective bidder is located, or the equivalent document for Exclusive Economic Zones or Areas;</i> e. <i>Valid Tax clearance per E.O. No. 398, s. 2005, as finally reviewed and approved by the Bureau of Internal Revenue (BIR). Quarterly Income Tax Returns filed and paid through the BIR Electronic Filing and Payment System (eFPS);</i> f. <i>The prospective bidder's audited financial statements, showing, among others, the prospective bidder's total and current assets and liabilities, stamped "received" by the BIR or its duly accredited and authorized institutions, for the preceding calendar year which should not be earlier than two (2) years from the date of bid submission;</i> g. <i>Philippine Contractors Accreditation Board (PCAB) License;</i> h. <i>Board of Accountancy (BOA) Certificate;</i> 2. <i>Contract and/or Notice of Award as supporting documents for NPC MinGen Form No. NPCMGNSF-INFR-01, if applicable;</i> 3. <i>(a) Valid Professional Regulation Commission (PRC) license for professional personnel; (b) Certificate of Training with accreditation from DOLE for the Construction Safety & Health Officer; (c) TESDA Training Certificate (NC II) of Welders or Electrician; and (d) Diploma and/or Service Record/Certificate of Employment of previous and/or current employer for Construction Foreman, Welders, Electrician & Plumber - as supporting documents for NPC MinGen Form No. NPCMGNSF-INFR-05, if applicable.</i> 4. <i>Certificate of Site Inspection issued by Plant/Department Manager or his authorized representative.</i>
21	<p>Additional contract documents relevant to the Project that may be required by existing laws and/or the Procuring Entity, <u>prior to contract signing</u>, such as:</p> <ol style="list-style-type: none"> a) Approved construction schedule and S-curve b) Approved manpower schedule c) Construction methods

	<ul style="list-style-type: none">d) Approved equipment utilization schedulee) Construction safety and health program approved by the DOLEf) Approved Project Evaluation Review Technique/Critical Path Method (PERT/CPM)
--	---

Section IV. General Conditions of Contract

1. Scope of Contract

This Contract shall include all such items, although not specifically mentioned, that can be reasonably inferred as being required for its completion as if such items were expressly mentioned herein. All the provisions of RA No. 9184 and its 2016 revised IRR, including the Generic Procurement Manual, and associated issuances, constitute the primary source for the terms and conditions of the Contract, and thus, applicable in contract implementation. Herein clauses shall serve as the secondary source for the terms and conditions of the Contract.

This is without prejudice to Sections 74.1 and 74.2 of the 2016 revised IRR of RA No. 9184 allowing the GPPB to amend the IRR, which shall be applied to all procurement activities, the advertisement, posting, or invitation of which were issued after the effectivity of the said amendment.

2. Sectional Completion of Works

If sectional completion is specified in the Special Conditions of Contract (SCC), references in the Conditions of Contract to the Works, the Completion Date, and the Intended Completion Date shall apply to any Section of the Works (other than references to the Completion Date and Intended Completion Date for the whole of the Works).

3. Possession of Site

- 4.1. The Procuring Entity shall give possession of all or parts of the Site to the Contractor based on the schedule of delivery indicated in the SCC, which corresponds to the execution of the Works. If the Contractor suffers delay or incurs cost from failure on the part of the Procuring Entity to give possession in accordance with the terms of this clause, the Procuring Entity's Representative shall give the Contractor a Contract Time Extension and certify such sum as fair to cover the cost incurred, which sum shall be paid by Procuring Entity.
- 4.2. If possession of a portion is not given by the above date, the Procuring Entity will be deemed to have delayed the start of the relevant activities. The resulting adjustments in contract time to address such delay may be addressed through contract extension provided under Annex "E" of the 2016 revised IRR of RA No. 9184.

4. The Contractor's Obligations

The Contractor shall employ the key personnel named in the Schedule of Key Personnel indicating their designation, in accordance with ITB Clause 10.3 and specified in the BDS, to carry out the supervision of the Works.

The Procuring Entity will approve any proposed replacement of key personnel only if their relevant qualifications and abilities are equal to or better than those of the personnel listed in the Schedule.

5. Performance Security

- 5.1. Within ten (10) calendar days from receipt of the Notice of Award from the Procuring Entity but in no case later than the signing of the contract by both parties, the successful Bidder shall furnish the performance security in any of the forms prescribed in Section 39 of the 2016 revised IRR.
- 5.2. The Contractor, by entering into the Contract with the Procuring Entity, acknowledges the right of the Procuring Entity to institute action pursuant to RA No. 3688 against any subcontractor be they an individual, firm, partnership, corporation, or association supplying the Contractor with labor, materials and/or equipment for the performance of this Contract.

6. Site Investigation Reports

The Contractor, in preparing the Bid, shall rely on any Site Investigation Reports referred to in the SCC supplemented by any information obtained by the Contractor.

7. Warranty

- 7.1. In case the Contractor fails to undertake the repair works under Section 62.2.2 of the 2016 revised IRR, the Procuring Entity shall forfeit its performance security, subject its property(ies) to attachment or garnishment proceedings, and perpetually disqualify it from participating in any public bidding. All payables of the GOP in his favor shall be offset to recover the costs.
- 7.2. The warranty against Structural Defects/Failures, except that occasioned-on force majeure, shall cover the period from the date of issuance of the Certificate of Final Acceptance by the Procuring Entity. Specific duration of the warranty is found in the SCC.

8. Liability of the Contractor

Subject to additional provisions, if any, set forth in the SCC, the Contractor's liability under this Contract shall be as provided by the laws of the Republic of the Philippines.

If the Contractor is a joint venture, all partners to the joint venture shall be jointly and severally liable to the Procuring Entity.

9. Termination for Other Causes

Contract termination shall be initiated in case it is determined *prima facie* by the Procuring Entity that the Contractor has engaged, before, or during the implementation of the contract, in unlawful deeds and behaviors relative to contract acquisition and implementation, such as, but not limited to corrupt, fraudulent, collusive, coercive, and obstructive practices as stated in ITB Clause 4.

10. Dayworks

Subject to the guidelines on Variation Order in Annex "E" of the 2016 revised IRR of RA No. 9184, and if applicable as indicated in the SCC, the Dayworks rates in the Contractor's Bid shall be used for small additional amounts of work only when the Procuring Entity's Representative has given written instructions in advance for additional work to be paid for in that way.

11. Program of Work

- 11.1. The Contractor shall submit to the Procuring Entity's Representative for approval the said Program of Work showing the general methods, arrangements, order, and timing for all the activities in the Works. The submissions of the Program of Work are indicated in the SCC.
- 11.2. The Contractor shall submit to the Procuring Entity's Representative for approval an updated Program of Work at intervals no longer than the period stated in the SCC. If the Contractor does not submit an updated Program of Work within this period, the Procuring Entity's Representative may withhold the amount stated in the SCC from the next payment certificate and continue to withhold this amount until the next payment after the date on which the overdue Program of Work has been submitted.

12. Instructions, Inspections and Audits

The Contractor shall permit the GOP or the Procuring Entity to inspect the Contractor's accounts and records relating to the performance of the Contractor and to have them audited by auditors of the GOP or the Procuring Entity, as may be required.

13. Advance Payment

The Procuring Entity shall, upon a written request of the Contractor which shall be submitted as a Contract document, make an advance payment to the Contractor in an amount not exceeding fifteen percent (15%) of the total contract price, to be made in lump sum, or at the most two installments according to a schedule specified in the SCC, subject to the requirements in Annex "E" of the 2016 revised IRR of RA No. 9184.

14. Progress Payments

The Contractor may submit a request for payment for Work accomplished. Such requests for payment shall be verified and certified by the Procuring Entity's Representative/Project Engineer. Except as otherwise stipulated in the SCC, materials and equipment delivered on the site but not completely put in place shall not be included for payment.

15. Operating and Maintenance Manuals

- 15.1. If required, the Contractor will provide "as built" Drawings and/or operating and maintenance manuals as specified in the SCC.
- 15.2. If the Contractor does not provide the Drawings and/or manuals by the dates stated above, or they do not receive the Procuring Entity's Representative's approval, the Procuring Entity's Representative may withhold the amount stated in the SCC from payments due to the Contractor.

Section V. Special Conditions of Contract

Special Conditions of Contract

GCC Clause	
2	Sectional completion is not specified.
4.1	The Procuring Entity shall give possession of the Site to the Contractor <i>on the start date.</i>
6	The site investigation reports are: NONE
7.2	Fifteen (15) years
10	Day works are not applicable to the contract.
11.1	The Contractor shall submit the Program of Work to the Procuring Entity's Representative upon contract signing or within three (3) days of delivery of the Notice of Award.
11.2	The amount to be withheld for late submission of an updated Program of Work is Fifty (50) % of the billed amount. The updating of Program of Work shall be done bi-monthly.
13	The amount of the advance payment is 15% of contract amount and paid in lump sum.
14	No further instruction.
15.1	The date by which operating and maintenance manuals are required is upon completion of the project. The date by which "as built" drawings are required is upon completion of the project.
15.2	The amount to be withheld for failing to produce "as built" drawings and/or operating and maintenance manuals by the date required is one hundred percent (100%) of the final billing.

Section VI. Specifications

PROJECT HIGHLIGHTS

PH 1.0 GENERAL

The project is funded by National Power Corporation, Mindanao Generation, Agus 1 & 2 Hydroelectric Power Plant Complex.

The project aims to construct Two (2) submarine net barricade at Agus 2 HE Plant, Pawak, Saguwaran, Lanao del Sur. This is deemed necessary as our Plant's operation is disturbed by garbage coming from the lake and Agus river channel. Some of the identified causes that aggravated the problem is the failure of the local government to implement RA 9003 - Ecological Solid Waste Management Act of 2000 specifically on the prevention, segregation and disposal of garbage and solid waste. It can be noted that majority of the lake shore and river bank barangays have no MRF to contain their wastes. Hence residents are forced to throw their rubbish at their Furthermore, this project also addressed the findings of PSALM and TUV specifically for environmental requirements.

The Contractor shall furnish all labor, materials, equipment, tools and other incidental matters necessary to complete the works in accordance with the contracts and approved detailed engineering activities; and other existing laws, rules and regulations relative thereto.

PH 2.0 PROJECT LOCATION

The project is located within the Agus 2 Hydroelectric Power Plant, Pawak, Saguwaran, Lanao del Sur.

PH 3.0 SCOPE OF WORK

The works and services to be performed by the Contractor for this undertaking shall essentially consist of, but not limited to the following, to wit:

1. MOBILIZATION
2. CONSTRUCTION SAFETY AND HEALTH PROGRAM
3. EXCAVATION/DEMOLITION
 - 3.1. PIER FOUNDATION/BACKFILLING
 - 3.2. GRAVEL BED (PLACE AND COMPACT)
4. CONCRETE WORKS
 - 4.1. PIER 1-F1, PIER 2-F2, PIER 3-F3 AND RECONCRETING OF DAM SLOPE
 - 4.2. FOUR (4) UNITS CONCRETE ANCHOR AND FOUR (4) PCS. PRECAST CONCRETE PILE, 350MMX350MMX6.0M TO BE DRIVEN
5. REINFORCEMENT BAR DSB
6. FOUR (4) UNITS WINCH HOUSING, MASONRY AND PLASTERING
 - 6.1. 4" CHB INCLUDING COLUMN, FLOORING, WALL FOORING MORTAR, G.I. PIPE DOOR, ROOF FRAMING, ROOF SHEATING, CEILING AND FASCIA BOARD
7. FABRICATION OF TRIPOD STEEL I BEAM, RAILINGS AND CAGE
8. FIXING OF TWO (2) UNITS ROPE SUBMARINE NET BARRICADE
9. TWO (2) UNITS FLOATING PLASTIC EMPTY DRUMS/BANGKA
10. INSTALLATION OF ELECTRICAL WIRE SERVICE DROP, POLE AND MOTOR WINCH
11. PAINTING WORKS
12. DEMOBILIZATION INCLUDING CLEARING OF SITE/ DEMOLITION OF CONTRACTORS' CAMP FACILITIES

PH 4.0 CONTRACT PERIOD

The contractor shall complete the works as specified in Clause 3 within **Seventy Five (75) calendar days**. The total contract duration is inclusive of six (6) unworkable days considered unfavorable for the execution of work at site. The contract period shall be reckoned from the date of contract effective as specified in the Notice to Proceed.

PH 5.0 CONTRACTOR'S CLASSIFICATION

The Contractor must have a valid Philippine Contractors Accreditation Board (PCAB) license of at least Category C or D – General Engineering with inter-agency registration of at least Small B – Dam, Reservoir or Tunneling.

The Contractor must have undertaken similar contracts that involves construction/rehabilitation/expansion of commercial, industrial or office building provided that the contract cost shall be at least equivalent to 50% of ABC.

TECHNICAL SPECIFICATIONS

TS-1.0 General Construction Facilities

Scope

This section covers the construction and/or maintenance of access roads, drainage systems and other appurtenant structures, moving-in of the Contractor's construction equipment, setting up the Contractor's camp facilities and the disposition of the Contractor's various facilities at the end of the Contract.

Moving-in

The Contractor shall bring to the site all his necessary construction equipment and plant and install all stationary construction equipment and plant at location and in the manner approved by NPC. The Contractor shall submit sufficient detailed plans showing the proposed location of such stationary equipment and plant and other pertinent data. No installation of such stationary equipment shall be undertaken unless the corresponding plans have been approved by NPC.

Contractor's Camp Facilities

The Contractor shall construct and maintain the service roads, and related work that may be necessary, to the various work area, and other areas such as access to the camps, stores, plants, disposal areas and other facilities related to the work.

The Contractor shall provide and grade his camp site, construct his camp, employee housing, warehouse, machines and repair shops, fuel storage tanks and provide such related facilities and sanitary conveniences that the Contractor deems necessary for maintaining health, peace and order in the camp and work areas. The areas that may be used by the Contractor within the plant site shall be designated by NPC.

The Contractor shall provide, maintain, and operate, under competent direction, such camps and facilities as are necessary for the housing, feeding and accommodation of his employees.

Water Supply

The Contractor shall, at his own expense, be responsible for the supply, installation, operation and maintenance of a safe and adequate supply of drinking and domestic water. Whenever there is a possibility of contamination of the water supply for drinking and domestic

purposes, chlorination or some other approved methods of sterilization shall be carried out. The installation and maintenance of these services shall be subject to the approval NPC.

Sewerage Disposal and Sanitation

The Contractor shall, at his own expense, be responsible for the installation, operation and maintenance of an adequate sewerage disposal and sanitation system and shall provide adequate toilet and wash-up facilities for his employees at his camp and in the areas where work is being carried out. The Contractor shall execute the work with due regard to adequate sanitary provisions and applicable codes and shall take all necessary steps to prevent the pollution of water in any spring, river, or other sources of water supply. All toilets or wash-up facilities shall be subject to the prior and continuing approval of NPC.

Fire Protection

The Contractor shall observe all necessary precautions against fire shall provide and maintain at his own expense, portable firefighting equipment he may deem necessary, and shall comply with all applicable laws of the Philippines relating thereto.

In the event of an uncontrollable fire occurring in the area of the Contractor's operation, the Contractor shall have to extinguish the fire immediately at his own expense, to the full extent of the manpower and equipment employed under the contract at the time of the fire.

The Contractor shall indemnify NPC against all liabilities, claims, damages and/or lawsuits arising thereto.

Construction Power

The Contractor shall be responsible for providing his own electric power supply required for construction and erection/installation. If power is available from NPC and should the contractor elect to utilise the NPC's power supply, he shall make an arrangement with NPC concerned group as to the billing rates and other requirements needed for direct connection to NPC.

Camp Security

The Contractor shall provide his own security force to the extent that he deems necessary for maintaining peace and order in the camp and work areas and to safeguard materials and equipment. Nothing under the provisions of this paragraph shall relieve the Contractor from full responsibility for the maintenance of peace and order and protection of life and property in all areas where he operates.

Construction Material Storage

The Contractor is required to put up cement warehouse (s) with capacities sufficient to store construction materials required in the work. The warehouse (s) shall be specifically for this contract notwithstanding his other facilities in the site that may serve the purpose.

Removal of Camp and Construction Facilities

After the completion of the work covered by the contract and prior to acceptance of the completed work, the entire camp facilities of the Contractor, including its water supply systems, electric distribution system, quarters, warehouses, shops, dining halls, commissaries, temporary shed and other facilities therein shall be removed by the Contractor. The site shall be cleared and cleaned as directed by NPC.

Measurement and Payment

No separate measurement and payment will be made for the Contractor's Construction Facilities. The entire cost thereof shall be included in the various pay items in the Bill of Quantities.

TS-2.0 CARE OF WATER DURING CONSTRUCTION

Scope

In accordance with the specifications contained in his section or otherwise directed, the Contractor shall construct and maintain all necessary temporary drainage ditches and other temporary protective works and he shall also furnish, install, maintain and operate necessary pumping equipment and other devices to protect construction operations free from water coming from any source, including rain.

Drainage and Dewatering

The Contractor shall be responsible for dewatering foundations areas so that work can be carried out on a suitably dry condition. The Contractor shall construct drainage ditches, holes, culverts, furnish, maintain and operate at his own expense all necessary pumps and other dewatering devices to keep all work areas free from water.

After the work is completed and before it is accepted by the NPC, the Contractor shall remove all pumping equipment and shall remove, fill or plug all temporary drainage structures as directed, all at his expense.

Measurement and Payment

No separate measurement and payment will be made for the Care of Water during Construction operations. The cost of furnishing, constructing, maintaining, operating and removing of temporary drainage structures, pumping systems and other dewatering devices necessary to keep construction operations free from water, shall be included in the various pay items in the Bill of Quantities for structures where such care of water is required.

TS-3.0 CONSTRUCTION SAFETY AND HEALTH PROGRAM

Scope

This section pertains to the environment and safety provisions, requirements and conditions that shall govern during the execution of all civil works under this project.

General Conditions

The Contractor shall ensure compliance with the applicable environmental and safety regulations, as well as ECC conditions, during installation/construction of this project through the implementation of measures that include, but not limited to the following:

- a. Designate a Safety Officer and a Pollution Control Officer who shall respectively handle all safety and environmental concerns of the project.
- b. Prepare and submit Construction Safety Health Plan (CSHP)
- c. Properly manage debris and various waste generated during installation/construction, such as the following:
 - Dispose of demolition and construction debris in a designated or NPC approved disposal area(s);

- Stockpile (and cover if possible) or haul to the designated and/or pre developed dump sites that shall be provided with suitable drainage-equipped with sediments traps, stripped top soil, spoils from quarry/borrow sites and excavated materials
 - Segregate solid wastes, such as empty cement sacks, scraps of tin or wood, used wires and other domestic garbage for recycling or storage in NPC-approved temporary storage areas and further disposal to LGU-designated disposal sites.
 - Properly handle, store and dispose off, through DENR-accredited transporter/treater, hazardous waste i.e. used oils, paints, thinner and etc.
- d. Limit construction activities that generate excessive, grading and excavation during dry weather.
- e. As far as practicable, undertake site stripping, grading and excavation during dry weather.
- f. Construction/Installation shall be carried out in a manner where landslides and erosions are minimized.
- g. Avoid unnecessary opening/clearing of areas outside construction sites or destruction of vegetable cover especially cutting of existing trees; and to re-vegetate disturbed areas.
- h. Spray water, whenever and wherever necessary, to minimize dust generation.
- i. Provide PPE's and other safety provisions required by DOLE, for its project/site works.

Measurement and Payment

Work prescribed herein shall not be measured and paid separately; same shall be deemed to be included in pay items for other items for work.

TS-4.0 SITE DEVELOPMENT AND EXCAVATION WORKS

General

The work to be executed under this section shall include the furnishing of all labor, tools and other facilities necessary for the satisfactory performance of all work necessary to complete the works specified in this specifications.

This item shall include necessary diverting of live streams, bailing, pumping, draining, sheeting, bracing, and the necessary construction of cribs and cofferdams, and furnishing the materials therefore, and the subsequent removal of cribs and cofferdams and the placing of all necessary backfill.

It shall also include the furnishing and placing of approved foundation fill material to replace unsuitable material encountered below the foundation elevation of structures.

The contractor shall rest stake out batter accurately established the elevation shown on the plan before any excavation is done. The basic batter board and reference mark shall be erected to such places where they will not disturb during excavation and construction of all wall foundation.

Construction Requirements

The Contractor shall notify the Engineer sufficiently in advance of the beginning of any excavation so that cross-sectional elevations and measurements may be taken on the undisturbed ground. The natural ground adjacent to the structure not be disturbed without permission of the Engineer.

Trenches or foundation pits for structures or structure footings shall be excavated to the lines and grades or elevations shown on the Plans or as staked by the Engineer. They shall be of sufficient size to permit the placing of structures or structure footings of the full width and

length shown. The elevations of the bottoms of footings, as shown on the Plans, shall be considered as approximate only and the Engineer may order, in writing, such changes in dimensions or elevations of footings as may be deemed necessary, to secure a satisfactory foundation.

Boulders, logs, and other objectionable materials encountered in excavation shall be removed. After each excavation is completed, the Contractor shall notify the Engineer to that effect and no footing, bedding material or pipe culvert shall be placed until the Engineer has approved the depth of excavation and the character of the foundation materials.

After rock or other hard foundation materials shall be cleaned all loose materials, and cut to a firm surface, either level, stepped, or serrated as directed by the Engineer. All seams or crevices shall be removed.

When the footing is to rest on material other than rock, excavation to final grade shall not be made until just before the footing is to be placed. When the foundation material is soft or mucky or otherwise unsuitable, as determined by the Engineer, the Contractor shall remove the unsuitable material and backfill with approved granular material. This foundation fill shall be placed and compacted in 150 mm (6 inches) layers up to the foundation elevation.

Utilization of Excavated Materials

All excavated materials, so far as suitable, shall be utilized as backfill or embankment. The surplus materials shall be disposed off in such manner as not to obstruct the stream or otherwise impair the efficiency or appearance of the structure. No excavated materials shall be deposited at any time so as to endanger the partly finished structure.

Measurement and Payment

Measurement and payment shall be made at the contract unit price or lot price as specified in the Bid Price Schedule. Payment shall include all cost in furnishing labor, materials, tool equipment and other incidentals necessary for the satisfactory completion of the project.

TS – 5.0 BACKFILLING WORKS

General

The work to be executed under this section shall include the furnishing of all, labor, tools, equipment and other facilities necessary for the satisfactory performance of all work necessary to complete the works specified in this specifications.

Material Requirements

Embankment shall be constructed of suitable materials, in consonance with the following definitions:

Suitable Materials – Material which is acceptable in accordance with the Contract and which can be compacted in the manner specified in this Item. It can be common material or rock.

Selected Borrow, for topping – soil of such gradation that all particles will pass a sieve with 75 mm (3 inches) square pass the 0.075 mm (No. 200) sieve, as determined by AASHTO T 11. The material shall have a plasticity index of not more than 6 as determined by ASSHTO T 90 and a liquid limit of not more than 30 as determined by ASSHTO T 89.

Unsuitable Material – Material other than suitable materials such as:

- a) Materials containing detrimental quantities of organic materials, such as grass, roots and sewerage.
- b) Organic soils such as peat and muck.
- c) Soils with liquid limit exceeding 80 and/or plasticity index exceeding 55.
- d) Soils with a natural water content exceeding 100%
- e) Soils with very low natural density, 800 kg/m^3 or lower.
- f) Soils that cannot be properly compacted as determined by the Engineer.

Construction Requirements

General

Prior to backfilling works, all necessary clearing and grubbing in that area shall have been performed.

Backfills shall contain no muck, peat, sod roots or other deleterious matter. Rocks, broken concrete or other solid, bulky materials shall not be placed in embankment areas where piling is to be placed or driven.

Where shown on the Plans or directed by the Engineer, the surface of the existing ground shall be compacted to a depth of 150 mm (6 inches) and to the specified requirements of this Item.

Methods of Construction

Backfill of earth material shall be placed in horizontal layers not exceeding 200 mm (8 inches), loose measurement, and shall be compacted as specified before the next layer is placed. However, thicker layer maybe placed if vibratory roller with high compactive effort is used provided that density requirement is attained and as approved by the Engineer. Trial section to this effect must be conducted and approved by the Engineer. Effective spreading equipment shall be used on each lift to obtain uniform thickness as determined in the trial section prior to compaction. As the compaction of each layer progresses, continuous leveling and manipulating will be required to assure uniform density. Removal of water shall be accomplished through aeration by plowing, blading, discing, or other methods satisfactory to the Engineer.

Compaction

The Contractor shall compact the material placed in all embankment layers and the material scarified to the designated depth until a uniform density of not less than 95 mass percent of the maximum dry density determined by AASHTO T

Measurement and Payment

Measurement and payment shall be made at the contract unit price or lot price as specified in the Bid Price Schedule. Payment shall include all cost in furnishing labor, materials, tools equipment and other incidentals necessary for the satisfactory completion of the project.

TS-6.0 REINFORCING STEEL

Description

This work shall consist of furnishing, fabricating, and placing of steel reinforcement of the type, size, shape and grade required in accordance with these specifications and in conformity with requirements shown on the Drawings or as directed by the NPC.

Material Requirement

All material shall conform to the requirement hereinafter given. Certified test reports (mill test or other) shall be submitted to the NPC for all reinforcement steel used. These tests shall show the results of all chemical and physical test made.

Bar Reinforcement

Reinforcement bars for concrete shall be hot-rolled, weld able, deformed billet steel bars conforming to the requirements specified in ASTM A615 and PNS 49 unless shown on the Drawings or as required by the NPC. The use of the cold twisted bars is not permitted. If not otherwise shown on the drawings, the deformed reinforcement steel shall be Grade 60 (minimum yield strength of 410 MPa) for 16 mm ϕ and bigger bars and Grade 40 (minimum yield strength of 275 MPa) for 12 mm ϕ and smaller bars. Bar Reinforcement shall be shipped in standard bundles, tagged and marked in accordance with the Code of Standard Practice of the Concrete Reinforcement Steel Institute.

Sampling

The NPC's Representative will sample reinforcement bars at the source of supply or at the point of distribution, and the Contractor shall notify the NPC in sufficient time advance to permit sampling and testing before shipment is made. Three (3) samples from each size shall be taken at random representing five (5) tons or fraction thereof of each size.

Construction Requirements

Order List for Bent Bars

Before materials are ordered, thy Contractor shall furnish all order lists and bending diagrams for the approval of the NPC. The approval of order lists and bending diagrams by the NPC shall in no way relieve the contractor of responsibility for the correctness of such lists and such list and diagrams. Any expenses incident to the revisions of materials furnished in accordance with such lists and diagrams to make them comply with the drawings shall be borne by the Contractor.

Shop Drawings for Reinforcing Steel (ACI 315): Indicate bending diagrams, assembly diagrams, splicing and laps of bars, shapes, dimensions and details of bar Reinforcing, accessories and concrete cover. Do not scale dimensions from structural drawings to determine length of Reinforcing steel.

Fabrication

Bent bar Reinforcement shall be cold bent as shown on the drawings or as required by the NPC. Bars shall be bent round circular pin having the following diameters (D) in relation to the diameter of the bar (d):

Bars 6mm ϕ inclusive. $D=6d$

Bars 25mm ϕ and 28mm ϕ . $D=8d$

Bars 32mm ϕ and greater. $D=10d$

Protection of Material

Steel Reinforcement shall be protected at all times from injury. When placed in the work, it shall be free from dirt, detrimental scale, paint, oil or other foreign matter. However, when steel has on its surface easily removable and detrimental rust, loose scale or dust, it shall be cleaned by a satisfactory method, approved by the NPC.

Store reinforcement of the different sizes in racks raised above the ground with accurate identification. Protect reinforcing steel from contaminants such as grease, oil and dirt.

Placing and Fastening Reinforcement & Miscellaneous Material (ACI 310)

All Reinforcement bars, stirrups, hanger bars, wire fabric, spirals and other reinforcing materials shall be there provided as indicated in the drawing or required by the specification, together with all necessary wire tie, chairs, screws, supports, and other devices necessary to install and secure the reinforcement properly. All reinforcement, when placed, shall be free from rust, scale, oil, grease, clay, and other coatings, and foreign substances to that would reduce or destroy the bond. Rusting of Reinforcement shall not reduce the effective cross sectional area of the Reinforcement to the extent that the strength is reduced beyond specified values. Heavy, thick rust or loose, flashy rust burlap or other approved method, prior to placing. Reinforcement that has bends not shown on the project drawings or on approved shop drawings, or is reduced in section by rusting such that its weight is not within permissible ASTM tolerances shall not be used. All reinforcement shall be supported and wired together to prevent displacement by construction loads or by the placing of concrete. Unless directed otherwise by the NPC, reinforcement shall not be bent after being partially embedded in hardened concrete. Detailing if reinforcing shall conform to ACI 315. Where cover over reinforcing steel is not specified or indicated, it shall be in accordance with ACI 318.

All steel reinforcement shall be accurately placed in position shown on the drawings or as required by the NPC and firmly held there during the placing and setting of the concrete. Bars shall be tied at all intersections except where spacing is less than 30 mm in each direction, when alternate intersections shall be tied. Ties shall fasten on the inside.

Distance from the forms shall be maintained by means of stays, blocks, hangers or other approved supports. Blocks for holding reinforcement from contact with the forms shall be pre-cast mortar blocks of approved and dimensions or approved chairs. Layers of bars shall be separated by pre-cast mortar blocks or by other equally suitable devices. The use of pebbles, pieces of broken stone or brick, metal pipe and wooden blocks or metal chairs shall not be permitted. Unless otherwise shown on the Drawings or required by the NPC, the minimum distance between bars shall be 40mm. Reinforcement in any member shall be placed and then inspected and approved by the NPC before the placing of concrete commences. Bundled bars shall be tied together at not more than 1.80 meters intervals.

Reinforcement shall be paced accurately and secured. It shall be supported by suitable chairs and spaces or by metal hangers. On the ground, and where otherwise subject to corrosion, concrete or other suitable non-corrodible material shall be used for supporting reinforcement. Where the concrete surface will be exposed to the weather in the finished structure or where rust would impair the appearance or finish of the structure, all reinforcement supports, within specified concrete cover, shall be galvanized or made of a suitable non-corrodible material.

All placement or movement of reinforcing steel after placement, to position other than indicated or specified, shall be subject to the approval of the NPC.

Concrete protection for reinforcement shall be as indicated, or if not indicated, in accordance with ACI 318.

The minimum concrete cover for reinforcement specified in the bid documents shall take precedence over all permissible reinforcement placement variations; nothing in the variations listed below is to be constructed as permitting violation or compromise thereof:

- | | |
|--|-----------------|
| a. Height of bottom bars | ±6mm above form |
| b. Lengthwise positioning | ±50mm of bars |
| c. Spacing bars in walls and solid slabs | ±25mm |
| d. Spacing bars in beams and footings | ±6mm |
| e. Height of top bars | ±6mm |
| f. Stirrup spacing | |

- (1) For any one stirrup ±25mm
(2) For over-all group ±25mm of stirrup

Anchors and bolts; including but not limited to those for the machine and equipment bases: frames or edging, hangers and inserts, door bucks, pipe supports, pipe sleeves, pipe passing through walls, metal ties, conduits, flashing reflects, drains and all other materials in connection with the concrete construction shall, where practicable be placed and secured in position when the concrete is placed. Anchor bolts for machines shall be set to templates, shall be plumbed carefully and checked for location and elevation with an instrument, and shall be held in position rigidly to prevent displacement while concrete is being placed.

Splicing

Splicing or reinforcement shall be in accordance with ACI 318, except as indicated otherwise or modified herein. Where splices in addition to those indicated on the drawings are necessary, they shall be approved by the NPC prior to their use. Splices shall not be made in beams, girders, and slabs, at points of maximum stress. Butt Splicing shall be preferably be used over lapping for bar sizes larger than 32 mmΦ. Splices to be welded shall conform to AWS D1.4; certification of weld ability of the reinforcement by the manufacturer shall be submitted to the NPC. If the Contractor elects to use butt splicing of reinforcing, he shall submit complete details of the process to be used by the NPC. If the butt splices are used the Contractor shall ensure that the splice meets the requirements specified herein by performing at least three splices which shall be submitted for tests to a testing laboratory that has been approved for such testing by the NPC. The cost of these shall be borne by the Contractor.

All reinforcement shall be furnished in the full lengths indicated on the Drawings Splicing of bars, except where shown on the Drawings will not be permitted without the written approval of the NPC. Splices shall be staggered as far as possible and with a minimum separation of not less than 40 bar diameters. Not more than one-third of the bars may be spliced in the same cross section, except where shown on the Drawings.

Unless otherwise shown on the Drawings, bar shall be lapped a minimum distance of:

Splice Type	Grade 40 Min.Lap	But Not Less Than
Tension	24d	300mm
Compression	20d	300mm

Where d is the diameter of the bar. In lapped splices, the bars shall be placed in contact and wired together. Lapped splices will not be permitted at locations where the concrete section is insufficient to provide a minimum clear distance of one and one-third the maximum size of coarse aggregate between the splice and the nearest adjacent bar. Welding of reinforcing steel shall only be done if detailed on the Drawings or if authorize by the NPC in writing. Spiral reinforcement shall be spliced by lapping at least one and half (1 ½) turns or by butt-welding unless otherwise shown on the drawings.

Measurement And Payment

The quantity to be paid for shall be calculated theoretical number of kilograms of reinforcement steel bars as determined from the net length of the steel shown on the drawings, incorporated in the concrete and accepted.

The weight of deformed bars will be computed from the theoretical weight of the same nominal size as shown in the following tabulation:

Designation	Size (mm)	Weight (kg/m)
-------------	-----------	---------------

6

9

#2	6	0.222
#3	10	0.616
#4	12	0.888
#5	16	1.579
#6	20	2.468
#8	25	3.854
#9	28	4.833
#10	32	6.313
#11	36	7.991

Clips, ties, separators and other and related materials used for positioning and fastening the reinforcement in places as required by the NPC shall not be included in the weight-calculated payment under this item. If bars are substituted upon the Contractor's request and as result, more steel is used than specified; only the amount specified shall be included.

When laps are made for splices, other than those shown on the drawings or required by the NPC and for the convenience of the Contractor, the extra steel shall not be measured nor paid for.

The accepted quantity shall be paid at the corresponding unit price for the item, Reinforcing Steel as shown in the Bill of Quantities which price and payment shall be made in full compensation for furnishing materials, labor, equipment and incidentals necessary to complete this item.

TS -7.0 CONCRETE WORKS

Scope

In accordance with the specifications contained in this section, the Contractor shall furnish all materials, labor, equipment and tools and perform all concreting works in accordance with the drawings, or as otherwise directed.

Class of Concrete

Class of concrete or strength shall be as indicated on the drawings. Unless specified, the comprehensive strength of concrete shall conform to the requirement indicated on the provision of NSCP for Concrete and/or shall be less than 20.7 MPa.

Materials

Cement

Cement for concrete works shall be furnished by the Contractor and shall conform to the requirement of the latest edition of the Standard Specifications for Portland Cement (ASTMC150).

Unless otherwise specified, concrete shall be ordinary Portland Cement. Type I for general construction which concrete is not in contact with soils or ground water and Type II for concrete in contact with soil or ground water.

Changing of brand or type of cement within the same structure will not be permitted unless with prior permission and approval obtained from the NPC.

Water

Water for use in concrete shall be subject to the approval of the NPC. It shall not be salty and shall be reasonably clear and free from oil, acid, injurious alkali or vegetable matter.

Fine Aggregates

Fine aggregates shall conform to the requirements of the latest edition of ASTM C33 and shall consist of hard, tough, durable and uncoated particles. Fine aggregates shall generally be rounded or cubical and reasonably free from flat or elongated particles. A thin, flat and elongated particle is defined as a particle having a maximum dimension greater than 5 times its maximum dimension.

Fine aggregate shall be well graded from coarse to fine, and gradation shall conform to the following requirements:

Sieve Designation U.S	Percentage by (Standard Square Mesh)	
	Weight Passing	
9.5 mm (3/8")	100	
4.76 mm (No. 4)	95-100	
1.19 mm (No. 16)	50-85	
0.297 (No. 50)	10-30	
0.149 mm (No. 100)	2-10	

Coarse Aggregates

Coarse aggregates shall conform to the requirements of the latest edition of ASTM C33 and shall consist of hard, tough, durable and clean, uncoated particles. All foreign materials and dust shall be removed by processing. Coarse aggregates shall generally be rounded and reasonably free from thin, flat and elongated particles (as Defined in CW-4.3.4 above) in all sizes.

Coarse aggregates shall be well graded from coarse to fine and gradation shall conform to the following requirements:

Size Group	Percentage by Weight Passing		
	19.1 mm	38.1 mm	76.2 mm
Sieve Designation	19.1 mm	38.1 mm	76.2 mm
U.S Std. Square Mesh	(3/4") max.	(1-1/2") max.	(3") max.
88.9 mm (3-1/2")	-	-	100
76.2 mm (3")	-	-	90-100
50.8 mm (2")	-	100	20-55
38.1 mm (1-1/2")	-	90-100	0-15

D

25.4 mm (1")	100	20-55	0-5
19.1 mm (3/4")	90-100	0-15	-
9.5 mm (3/8")	20-55	0-5	-
4.76 mm (No. 4)	0-15	-	-
2.38 mm (No. 8)	0-5	-	-

General Use Minimum General Aggregate Diameter

Massive Concrete	76.2 mm (3")
Heavy walls and slabs (0.75 m thick or more)	76.2 mm (3")
Walls, slabs, beams (0.30 m to 0.75 m thick)	38.1 mm (1 1/2")
Thin walls, slabs, beam (Less than 0.30 m thickness)	19.1 mm (3/4")

Mixing Concrete

Mixing of concrete shall conform to the requirements of ACI Code for Concrete Construction.

Placing Concrete

Concrete shall be conveyed from mixers to the forms or to the place of deposit as rapidly as possible and by methods that will prevent segregation or loss of ingredients. These shall be no vertical drop greater than 1.5 meters except where suitable equipment like metal be pipe or tremie is used. The pipe or tremie shall be kept full of concrete and its end shall be kept buried in the newly placed concrete. Chutes through which concrete is delivered to the structure in a thin, continuously exposed flow will not be permitted except for every limited or isolated sections of the work.

Earth surface, upon which concrete shall be placed, shall be cleaned, dry and thoroughly compacted before placing the concrete.

Rock surfaces, upon which concrete shall be placed, shall be thoroughly cleaned of loose or semi-detached or unsound rock particles. Before placing concrete, all surfaces shall be wetted thoroughly to keep them in a completely moist condition, after which leveling mortar of the same cement ratio as the concrete mix complete contact between concrete and the leveled surface.

Finishing Concrete

After the concrete has been deposited, distributed and vibrated, the concrete shall be struck off and screened by mechanical means approved by the NPC. The finishing machine shall be of the screening and troweling type designed and operated both to strike off and to consolidate. Hand finishing may be employed when suitable finishing machines are not available. Finishing of concrete shall be done, as directed, to the satisfaction of the NPC.

All finished surfaces shall be tested with 3 meters straight edge and any variation of the surface from the desired crown or cross section shall be properly corrected.

0

2

Removal of Forms

Forms shall be removed as soon as practicable in order to avoid delay in curing and to make possible earliest practicable repair of surface imperfections, but in no case shall they be removed without approval. Any needed repair or treatment shall be performed at once and shall be followed immediately by the specified curing. Forms shall be removed with care so as to avoid injury to the concrete and any concrete so damaged shall be repaired as directed.

Curing and Protection

Concrete shall be cured for a period of not less than fourteen (14) consecutive days by keeping the surfaces of concrete continuously (not periodically) wet. Where tongue and groove forms were used and left in place of curing, they shall be kept wet at all times prevent opening at the joints and drying out of the concrete.

Sampling and Testing of Concrete

No concrete work on the project will be permitted to be done until NPC signifies in writing that, following the performance of the necessary tests, he gives his approval to the use of all materials involve in making the concrete.

As work progresses, test cylinder shall be fabricated from the concrete samples and tested in accordance with ASTM C31 and ASTM C39. At least one set of four (4) cylinders shall be made from each 75 cu.m of the concrete placed of each class. Also at least one set shall be made per day for each class of concrete placed each day.

Two (2) cylinders shall be tested at 28 days for specification compliance and one shall be tested at 7 and 14 days respectively for information. The acceptance test result shall be the average of the strength of the two cylinders tested at 28 days.

The compressive strength of the concrete shall be deemed acceptable if the averages of the three consecutive strength test results is equal to or exceeds the specified strength and no individual test falls below the specified strength by more than 3.50 MPa.

Concrete deemed to be not acceptable using the above criteria maybe rejected unless the Contractor can provide evidence, by means of core tests, that the quality of concrete represented by the failed test result is acceptable in place. Three (3) cores shall be taken in accordance with ASTM C42 and soaked for 24 hours prior to testing. Concrete in the area represented by the cores will be deemed acceptable if the average strength of the cores is equal to at least 85% of and no single core is less than 75% of the specified strength.

Tolerances and Repair for Concrete Construction

Concrete structure shall be constructed to the lines shown on the drawings or where so required to suit actual field requirements. Any structure that does not conform to such lines shall be repaired or removed and made a new by the Contractor at no additional cost to NPC.

Repairs shall be made at surface imperfection due to faulty placing of concrete and cuts on the structures due to the removal of excess concrete on the lines shown on the drawings. Such repairs shall he made immediately after early stripping of the forms, after the imperfections have been identified and the methods or repair appropriately established.

Measurement And Payment

Measurement for payment for Concrete (except concrete which shall not be measurement for separate payment) will be based on the volume of concrete placed and accepted within the neat lines of the manner of measurement set forth in the various sections of the Technical Provisions. No deduction will be made for rounded or beveled edges or space occupied by the metal items 10 sq. cm. or less in cross section, embedded in concrete.

Payment will be made at the corresponding contract unit price for the various items of concrete shown in the Bill of Quantities. Payment shall cover all costs for furnishing all labor, materials, including equipment and tools required for concreting work. Payment shall also include care of water.

TS -8.0 MASONRY/ PLASTER WORKS

General

Concrete masonry construction shall include the furnishing of all labor, material, and equipment, and performing all operations necessary to execute all concrete masonry construction, as specified.

Contractor shall make all preparations and do all work necessary to receive and adjoin other work.

Contractor shall specify the position of all dowels required for masonry on other construction, including foundations.

Materials:

Concrete Hollow Blocks

All property wall shall be 100mm thick x 200mm x 40mm non-bearing concrete hollow blocks.

Mortar/Grout

Cement mortar proportions for laying the Concrete Hollow Blocks shall consist of one (1) part Portland cement (Portland cement of approved brand conforming to ASTM specifications C150, Type I), and three (3) parts fine sand. Only sufficient water to make a workable mix will be permitted.

Reinforcing Steel

Reinforcing steel shall be 10mm diameter, Grade 40, spaced at 600mm on-center along horizontal and vertical of the walls. Reinforcement shall be secure with a Ga. 16 tie wire.

Masonry Construction

Blocks shall be cut accurately to fit all plumbing ducts, openings, electrical work, and all voids slushed full. Where walls are to receive plaster, the joints should be struck flush. Where certain joints are to be concealed underpaint, these joints shall be filled flush and then sacked to produce a dense surface without sheen.

Vertical head joints shall be buttered well for a thickness equal to the face shell of the block and these joints shall be shoved tightly so that the mortar bonds well to both blocks. Joints shall be solidly filled from the face of the block to the depth of the face shell.

Grouting

Reinforcing steel shall be in place and inspected before grouting starts. Vertical cells to be filled with mortar shall have vertical alignment to maintain a continuous unobstructed cell area. Cells containing reinforcement shall be solidly filled with grout.

PLASTERING

Mixture

Mortar mixture for first coat shall be freshly prepared and uniformly mixed in the proportion by volume of one part Portland cement, three (3) parts sand. Finish coat shall be pure Portland cement properly graded. Hydraulic Cement and mixed with water to approved consistency and plasticity.

Surface Preparation

- a) After removals of formworks, reinforced concrete surfaces shall be roughened to improve adhesion of cement plaster.
- b) Surfaces to receive cement plaster shall be cleaned of all projections, dust, loose particles, grease and bond breakers. Before any application of brown coat is commenced all surfaces that are to be plastered shall be wetted thoroughly with clean water to produce a uniformly moist condition.

Application

- a) First coat mortar mix shall be applied with sufficient pressure starting from the lower portion of the surface to fill the grooved and to prevent air pockets in the reinforced concrete/masonry work and avoid mortar mix drooping. The coat shall be lightly broom/scratch before surface had properly set and allowed to cure.
- b) Finish coat shall not be applied until after first coat has seasoned for seven days and corrective measures had been done by the Contractor on surfaces that are defective. Just before the application of the finish coat, the first coat surface shall be evenly moistened with potable water. Finish coat shall be floated first to to the even surface, then troweled in a manner that will force the mixture to penetrate into the first coat. Surfaces applied with finish coat shall then be smooth with paper in a circular motion to remove trowel marks, checks and blemishes. All cement plaster finish shall be 10mm thick minimum on vertical concrete and/or masonry walls.

Workmanship

Cement plaster finish shall be true to details and plumb. Finish surface shall have no visible junction marks where one (1) Day's work adjoins the other. Where directed by the NPC or as shown on the Plans vertical and horizontal groove joints shall be 25mm wide and 10mm deep.

Measurement and Payment

Measurement and payment shall be made at the contract unit price or lot price as specified in the Bill of Quantities. Payment shall include all cost in furnishing labor, materials, tools, equipment and other incidentals necessary for the satisfactory completion of the project.

TS -9.0 METAL STRUCTURES

Description

This work shall consist of steel structures and the steel structure portions of composite structures, constructed in reasonably close conformity with the lines, grades and dimensions shown on the Plans or established by the NPC Engineer. The work will include the furnishing, fabricating, hauling, erecting, welding and painting of structural metals called for in the Special Provision or shown on the Plans. Structural metals will include structural steel, rivet, welding, special and alloy steels, steel forgings and castings and iron castings. This work will also include any incidental metal construction not otherwise provided for, all in accordance with these Specifications, Plans and Special Provisions.

Material Requirements

Materials shall meet the requirements of Item 712, Structural Metal; Item 409, Welded Structural Steel, and Item 409, Welded Structural Steel; and Item 709, Paints.

Construction Requirements

Welding

Welding shall be done in accordance with the best modern practice and the applicable requirements at AWS D1.1 except as modified by AASHTO "Standard Specifications for Welding of Structural Steel Highway Bridges".

a. Erection

The Contractor shall provide the falsework and all tools, machinery and appliances, including driftpins and fitting-up bolts, necessary for the expeditious handling of the work and shall erect the metal work, remove the temporary construction, and do all work necessary to complete the structure as required by the Contract and in accordance with the Plans and these Specifications.

If shown on the Plans or in the Special Provisions, the Contractor shall dismantle the old structure on the bridge site in accordance with Item 101, Removal of Structures and Obstructions.

b. Handling and Storing Materials

Materials to be stored shall be placed on skids above the ground. It shall be kept clean and properly drained. Girders and beams shall be placed upright and shored. Long members, such as columns and chords, shall be supported on skids placed near enough together to prevent injury from deflection. If the Contract is for erection only, the Contractor shall check the material turned over to him against the shipping lists and report promptly in writing any shortage or damage discovered. He shall be responsible for the loss of any material while in his care, or for any damage caused to it after being received by him.

c. Straightening Bent Materials

The strengthening of plates, angles, other shapes and built-up members, when permitted by the Engineer, shall be done by methods that will not produce fracture or other injury. Distorted members shall be straightened by mechanical means or, if approved by the Engineer, by the carefully planned and supervised application of a limited amount of localized heat, except that heat straightening of AASHTO M 244 (ASTM A 514) or ASTM A 517 steel members shall be done only under rigidly controlled procedures, each application subject to the approval of the Engineer. In no case shall the maximum temperature of the AASHTO M 244 (ASTM A 514) or ASTM A 517 steels exceed 607.2°C, nor shall the temperature exceed 510°C at the weld metal or within 152.4 mm of weld metal. Heat shall not be applied directly on

weld metal. In all other steels, the temperature of the heated area shall not exceed 648.9°C (a dull red) as controlled by temperature indicating crayons, liquids or bimetal thermometers.

Parts to be heat-straightened shall be substantially free of stress and from external forces, except stresses resulting from mechanical means used in conjunction with the application of heat.

Following the straightening of a bend or buckle, the surface of the metal shall be carefully inspected for evidence of fracture.

d. Assembling Steel

The parts shall be accurately assembled as shown on the working drawings and any matchmarks shall be followed. The material shall be carefully handled so that no parts will be bent, broken or otherwise damaged. Hammering which will injure or distort the members shall not be done. Bearing surfaces and surfaces to be in permanent contact shall be cleaned before the members are assembled. Unless erected by the cantilever methods, truss spans shall be erected on blocking so placed as to give the trusses proper camber. The blocking shall be left in place until the tension chord splices are fully connected with permanent fasteners and all other truss connections pinned and erection bolted. Splices of butt joints of compression members, that are milled to bear and of railing shall not be permanently fastened until the spans have been swung, except that such permanent fastening may be accomplished for the truss members at any time that joint holes are fair. Splices and field connections shall have one-half of the holes filled with erection bolts and cylindrical erection pins (half bolts and half pins) before placing permanent fasteners. Splices and connections carrying traffic during erection shall have three-fourths of the holes so filled, unless otherwise permitted by the Engineer.

Fitting-up bolts shall be of the same nominal diameter as the permanent fasteners and cylindrical erection pins will be 1.6 mm larger.

e. Riveting

Pneumatic hammers shall be used for field riveting except when the use of hand tools is permitted by the Engineer. Rivets larger than mm in diameter shall not be driven by hand. Cup-faced dollies, fitting the head closely to insure good bearing, shall be used. Connections shall be accurately and securely fitted up before the rivets are driven.

Drifting shall be only such as to draw the parts into position and not sufficient to enlarge the holes or distort the metal. Unfair holes shall be reamed or drilled. Rivets shall be heated uniformly to a "light cherry red" color and shall be driven while hot. They shall not be overheated or burned. Rivet heads shall be full and symmetrical, concentric with the shank, and shall have full bearing all around. They shall not be smaller than the heads of the shop rivets. Rivets shall be tight and shall grip the connected parts securely together. Caulking or recupping will not be permitted. In removing rivets, the surrounding metal shall not be injured. If necessary, they shall be drilled out.

f. Pin Connections

Pilot and driving nuts shall be used in driving pins. They shall be furnished by the Contractor without charge. Pins shall be so driven that the members will take full bearing on them. Pin nuts shall be screwed up tight and the threads burred at the face of the nut with a pointed tool.

g. Setting Shoes and Bearings

Shoes and bearing shall not be placed on bridge seat bearing areas that are improperly finished, deformed, or irregular. They shall be set level in exact position and shall have full and even bearing. The shoes and bearing plates may be set by either of the following methods:

1. Method 1

The bridge seat bearing area shall be heavily coated with red lead paint and then covered with three layers of 405 to 472 g/m² duck, each layer being coated thoroughly on its top surface with red lead paint. The shoes and bearing plates shall be placed in position while the paint is plastic. As alternatives to canvas and red lead, and when so noted on the Plans or upon written permission by the Engineer, the following may be used:

- a. Sheet lead of the designated thickness
- b. Preformed fabric pad composed of multiple layers of 270 g/m² duck impregnated and bound with high quality natural rubber or of equivalent and equally suitable materials compressed into resilient pads of uniform thickness. The number of plies shall be such as to produce the specified thickness, after compression and vulcanizing. The finished pads shall withstand compression loads perpendicular to the plane of the laminations of not less than 7 kg/mm² without detrimental reduction in thickness or extension.
- c. Elastomeric bearing pads

2. Method 2

The shoes and bearing plates shall be properly supported and fixed with grout. No load shall be placed on them until the grout has set for at least 96 hours, adequate provision being made to keep the grout well moistened during this period. The grout shall consist of one part Portland Cement to one part of fine-grained sand.

The location of the anchor bolts in relation to the slotted holes in expansion shoes shall correspond with the temperature at the time of erection. The nuts on anchor bolts at the expansion ends shall be adjusted to permit the free movement of the span.

h. Painting of Metal Surfaces

a) Preparing Metal Surfaces for Painting

All surfaces of new structural steel which are to be painted shall be blast cleaned unless otherwise specified in the Special Provisions or approved in writing by the Engineer. In repainting existing structures where partial cleaning is required, the method of cleaning will be specified in the Special Provision. The steel surfaces to be painted shall be prepared as outlined in the "Steel Structures Painting Council Specifications" (SSPC) meeting one of the following classes of surface preparation.

b) System of Paint The paint system to be applied shall consist of one as set forth in Table 403.4 and as modified in the Special Provisions.

c) Painting Metal Surfaces

Time of Application

The prime coat of paint or pretreatment when specified, shall be applied as soon as possible after the surface has been cleaned and before deterioration of the surface occurs. Any oil, grease, soil, dust or foreign matter deposited on the surface after

the surface preparation is completed shall be removed prior to painting. In the event the rusting occurs after completion of the surface preparation, the surfaces shall be again cleaned. Particular care shall be taken to prevent the contamination of cleaned surfaces with salts, acids, alkali, or other corrosive chemicals before the prime coat is applied and between applications of the remaining coats of paint. Such contaminants shall be removed from the surface. Under these circumstances, the pretreatments or, in the absence of a pretreatment, the prime coat of paint shall be applied immediately after the surface has been cleaned.

Storage of Paint and Thinner

All paint and thinner should preferably be stored in a separate building or room that is well ventilated and free from excessive heat, sparks, flame or the direct ray of the sun. All containers of paint should remain unopened until required for use. Containers which have been opened shall be used first. Paint which has livered, gelled, or otherwise deteriorated during storage shall not be used. Thixotropic materials which may be stirred to attain normal consistency are satisfactory.

Mixing and Thinning

All ingredients in any container of paint shall be thoroughly mixed before use and shall be agitated often enough during application to keep the pigment in suspension. Paint mixed in the original container shall not be transferred until all settled pigment is incorporated into the vehicle. This does not imply that part of the vehicle cannot be poured off temporarily to simplify the mixing. Mixing shall be by mechanical methods, except that hand mixing will be permitted for container up to 19 litres in size. Mixing in open containers shall be done in a well ventilated area away from sparks or flames. Paint shall not be mixed or kept in suspension by means of an air stream bubbling under the paint surface. When a skin has formed in the container, the skin shall be cut loose from the sides of the container, removed, and discarded. If such skins are thick enough to have a practical effect on the composition and quality of the paint, the paint shall not be used. The paint shall be mixed in manner which will insure breaking up of all lumps, complete dispersion of settled pigment, and a uniform composition. If mixing is done by hand, most of the vehicle shall be poured off into a clean container. The pigment in the paint shall be lifted from the bottom of the container with a broad, flat paddle, lumps shall be broken up, and the pigment thoroughly mixed with the vehicle. The poured off vehicle shall be returned to the paint with simultaneous stirring, or pouring repeatedly from one container to another until the composition is uniform. The bottom of the container shall be inspected for unmixed pigment. Tinting pastes or colors shall be wetted with a small amount of thinner, vehicle, or paint and thoroughly mixed. The thinned mixture shall be added to the large container of paint and mixed until the color is uniform. Paint which does not have a limited pot life, or does not deteriorate on standing, may be mixed at any time before using, but if settling has occurred, it must be remixed immediately before using. Paint shall not remain in spray pots, painter's buckets, etc., overnight, but shall be gathered into a container and remixed before use. No thinner shall be added to the paint unless necessary for proper application. In no case shall more than 0.5 litres of thinner be added per 3.8 litres unless the paint is intentionally formulated for greater thinning. The type of thinner shall comply with the paint specification. When the use of thinner is permissible, thinner shall be added to paint during the mixing process. Painters shall not When the use of thinner is permissible, thinner shall be added to paint during the mixing process. Painters shall not add thinner to paint after it has been thinned to the correct consistency.

All thinning shall be done under supervision of one acquainted with the correct amount and type of thinner to be added to the paint.

Application of Paint

General

The oldest of each kind of paint shall be used first. Paint shall be applied by brushing or spraying or a combination of these methods. Daubers or sheepskins may be used when no other method is practicable for proper application in places of difficult access. Dipping, roller coating, or flow coating shall be used only when specifically authorized. All paints shall be applied in accordance with the manufacturer's instructions.

Open seams at contact surfaces of built up members which would retain moisture shall be caulked with red lead paste, or other approved material, before the second undercoat of paint is applied.

Paint shall not be applied when the surrounding air temperature is below 4.4°C. Paint shall not be applied when the temperature is expected to drop to 0°C before the paint has dried.

Measurement and Payment

All measurement and payment shall be made at the contract unit price or lot, price of the various applicable items specified in the Bid Price Schedule. Payment shall include all cost in furnishing labor, materials, equipment and other incidentals necessary for the satisfactory completion of the project.

TS-10.0 CLEAN-UP AND DEMOBILIZATION

General Scope

This item shall consist of the disposition of entire Contractor's camp facilities, clearing and cleaning at the work site.

Workmanship

Before moving out, the contractor shall restore the orderly state of worksite by clearing all temporary structures. Remove all excess/waste materials and store in designated areas.

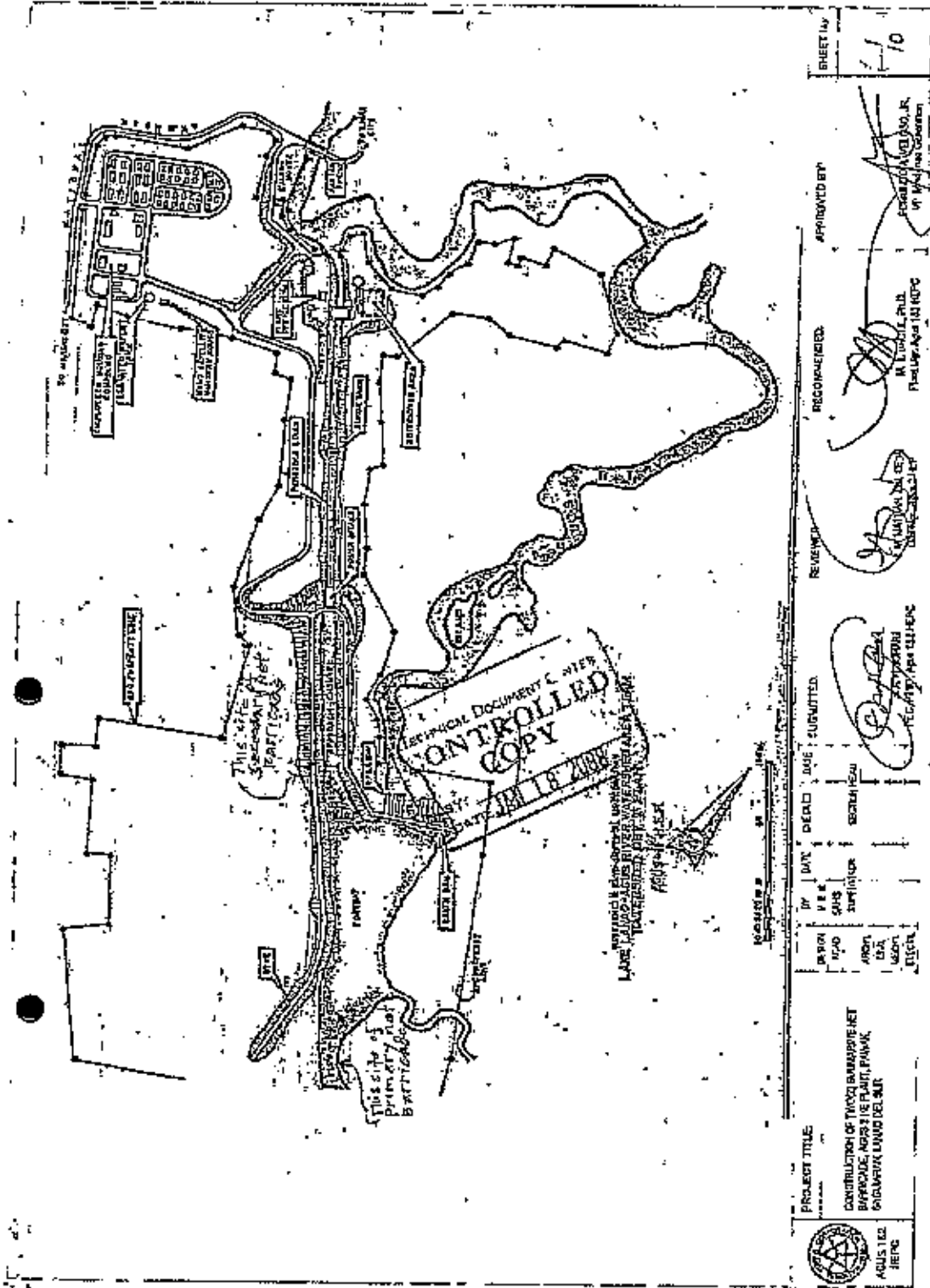
Before the Contractor will demobilize its construction equipment/ tools, materials and crew, he shall secure approval from NPC and a joint inspection with the NPC inspector and Contractor will be conducted to make sure that all his accomplishment/ work that needs remedial attention or correction shall be done prior to the issuance of the Certificate of Completion.

Measurement and Payment

Work prescribed herein shall not be measured and paid separately; same shall be deemed to be included in pay items for other items for work.

Section VII. Drawings

- Sheet No. 1/10* - *LOCATION PLAN*
- Sheet No. 2/10* - *SUBMARINE BARRICAD PLAN & FOUNDATION PLAN*
- Sheet No. 3/10* - *FRONT ELEVATION*
- Sheet No. 4/10* - *TRIPOD PLAN & FRONT ELEVATION*
- Sheet No. 5/10* - *PIER- F1, PIER-F2, PIER-F3 DETAILS*
- Sheet No. 6/10* - *WINCH HOUSING PLAN, ELEVATION VIEWS, ROOF PLAN & G.I. PIPE DOOR*
- Sheet No. 7/10* - *C1-F1 & WF*
- Sheet No. 8/10* - *CEILING & HALF TRUSS DETAILS*
- Sheet No. 9/10* - *RAILING AND CAGE PLAN & DETAIL*
- Sheet No. 10/10* - *FLOATING PLASTIC DRUM/BANGKA PLAN & SIDE ELEVATION*



PROJECT TITLE:
CONSTRUCTION OF THREE SUBMARINE NET BARRICADE, AGUS 2 HEP, PANAM, GUANAJAY, LONG DEL SUR

AGUS 2 HEP

REVISIONS:

NO.	DATE	DESCRIPTION

APPROVED BY: [Signature]

RECOMMENDED: [Signature]

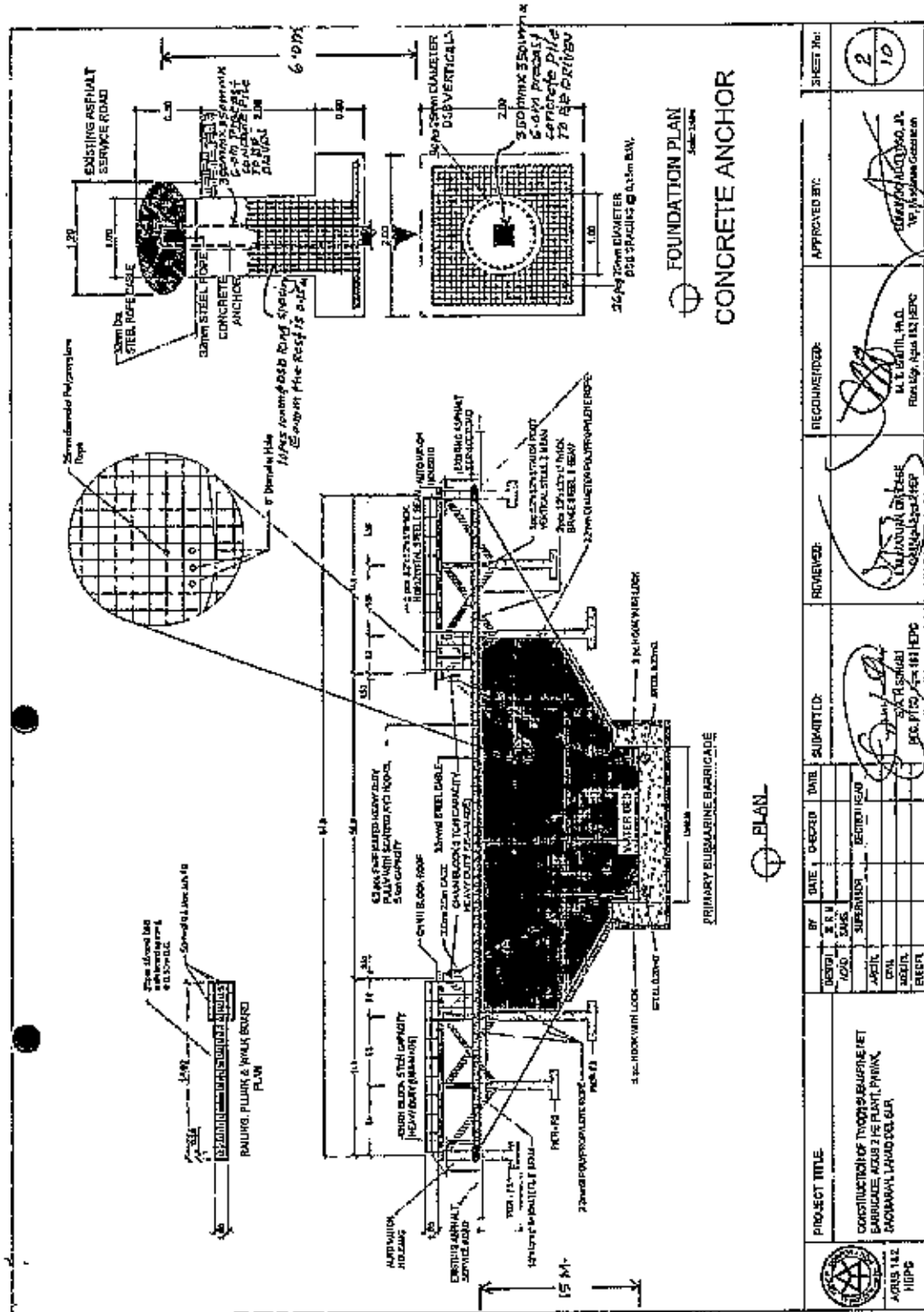
REVIEWED: [Signature]

SUBMITTED: [Signature]

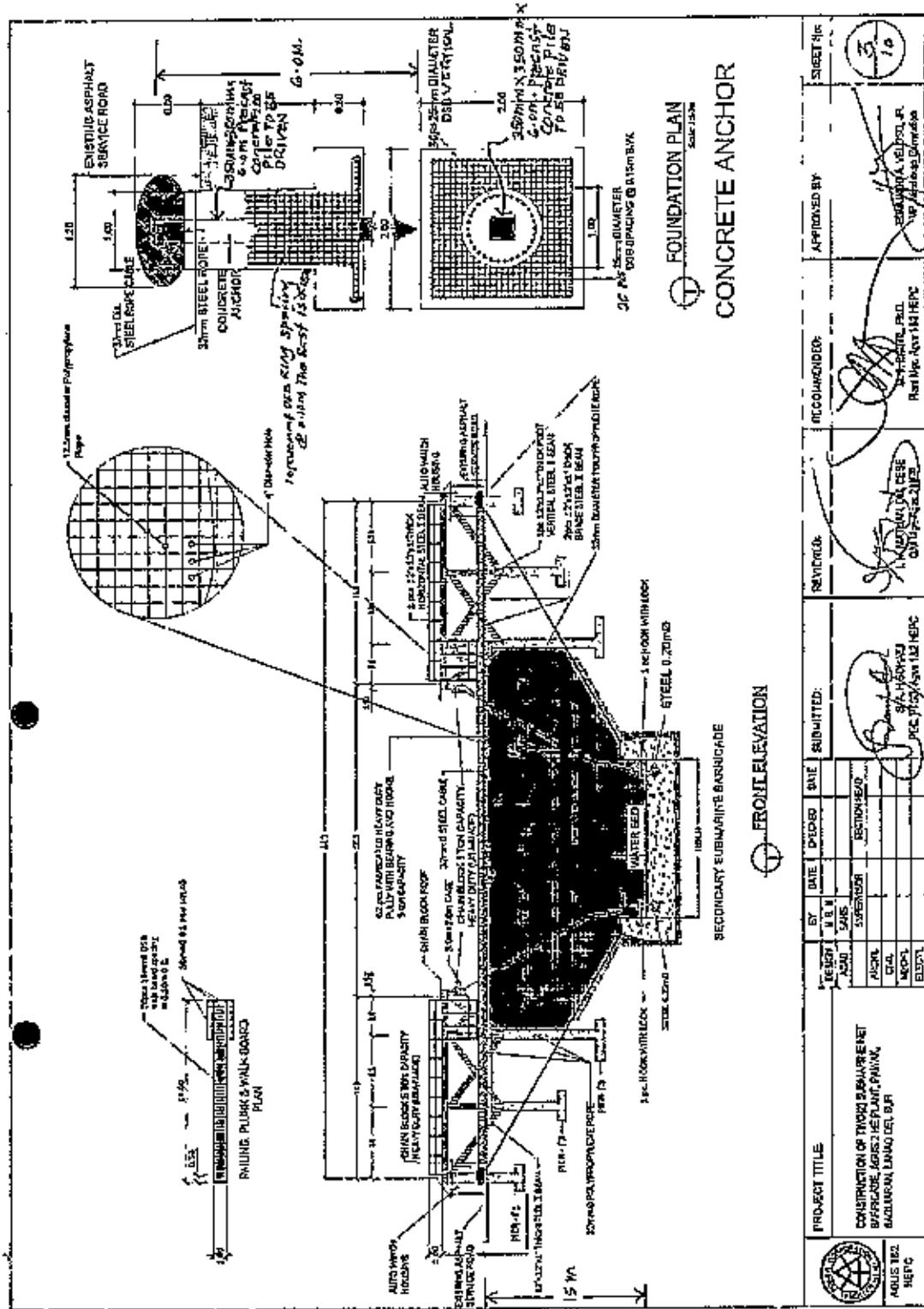
DATE SUBMITTED: [Date]

SCALE: 1:10

SHEET NO.: 10



		PROJECT TITLE: CONSTRUCTION OF TYPICAL SUBMARINE NET BARRICADE AT AGUS 2 HE PLANT, PIVAK, CAGAMARAN, LAZARO DEL SUR	SHEET No.: 2 / 10
DESIGNER: AYO SANS	DATE:	BY:	APPROVED BY:
SUPERVISOR: JACIL	DATE:	SUBMITTED:	RECOMMENDED:
CHECKER: REGIE	DATE:	REVIEWED:	APPROVED:
REVISOR: REGIE	DATE:	SUBMITTED:	APPROVED:

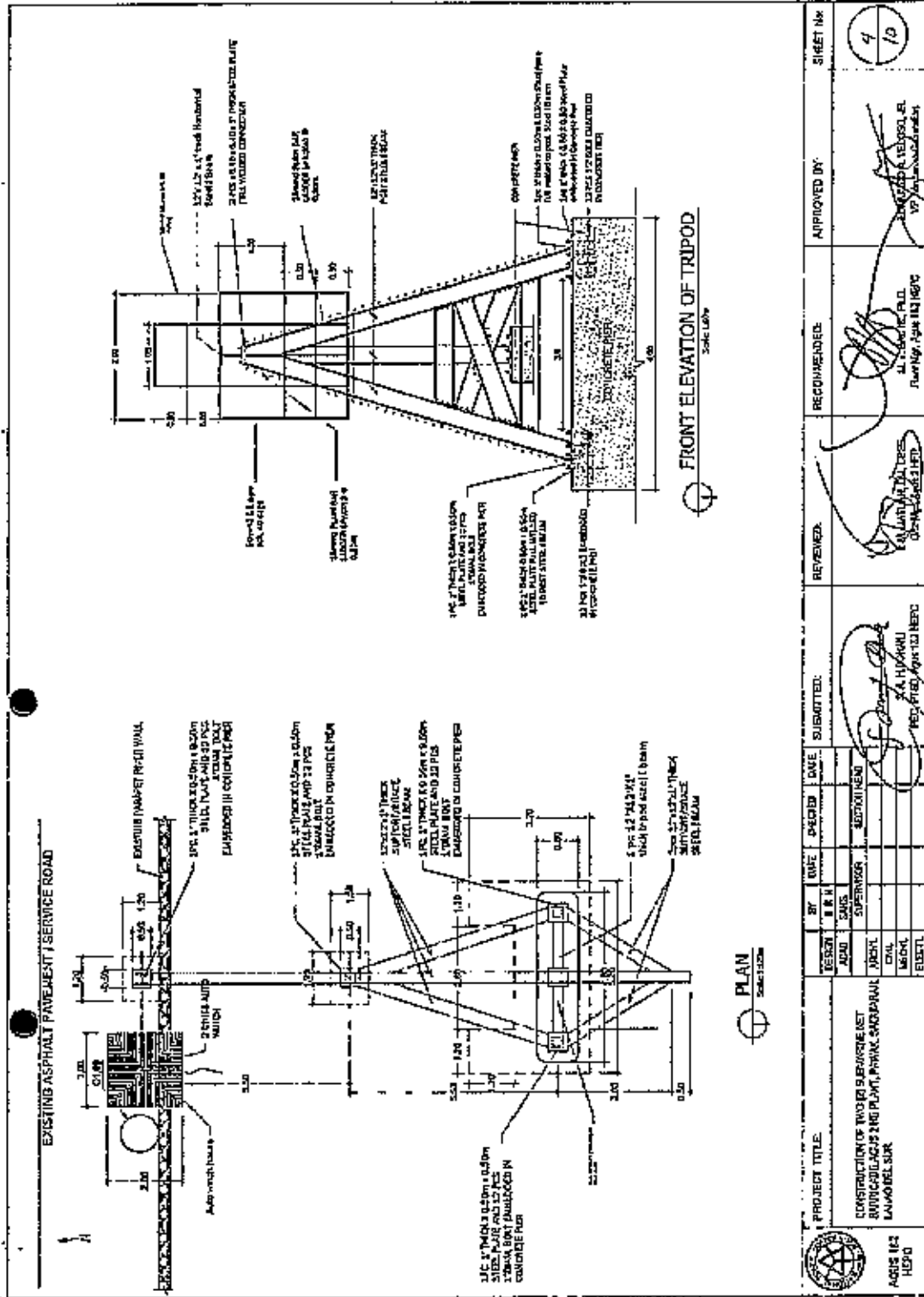


FOUNDATION PLAN
Scale 1:50

CONCRETE ANCHOR

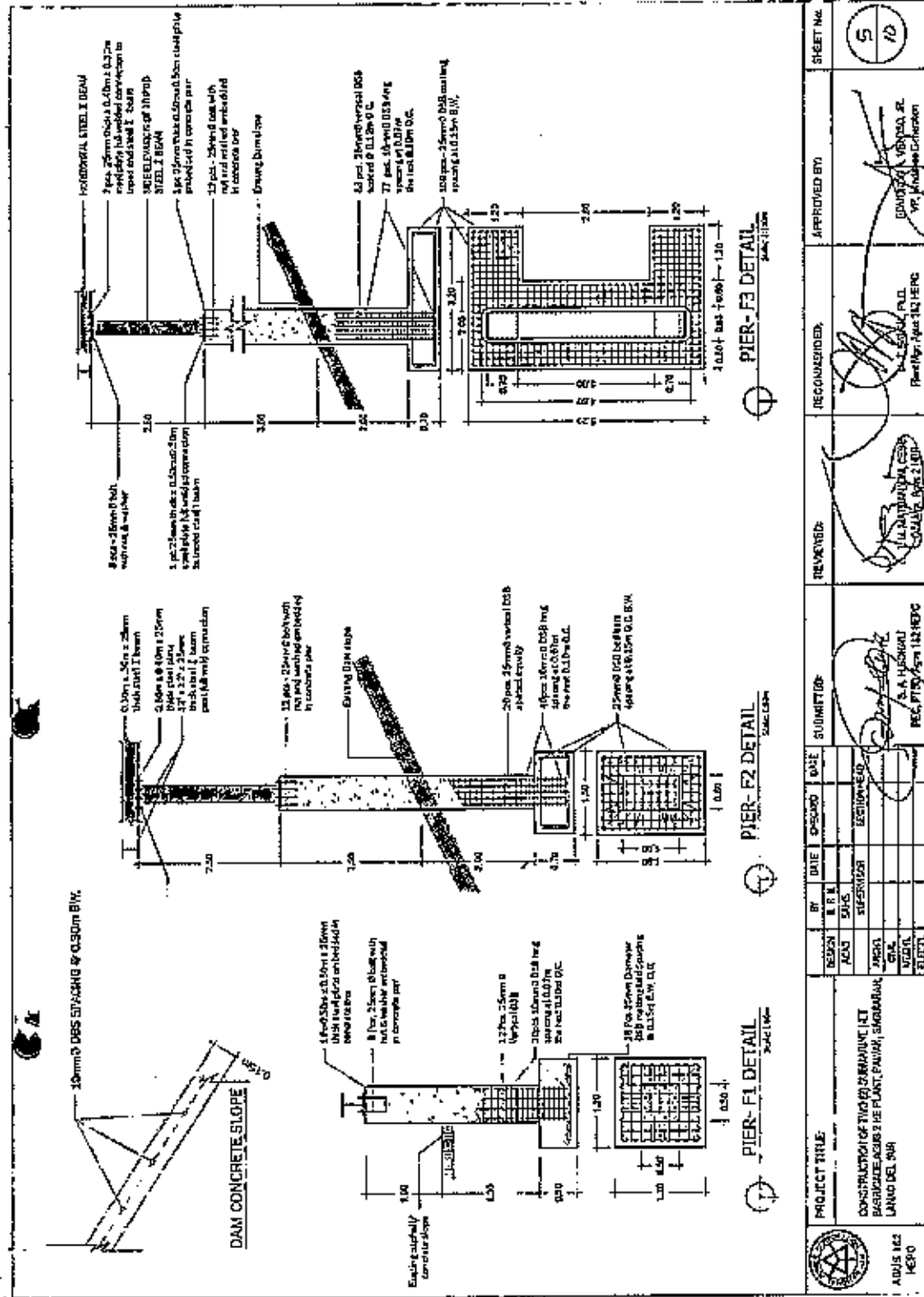
FRONT ELEVATION

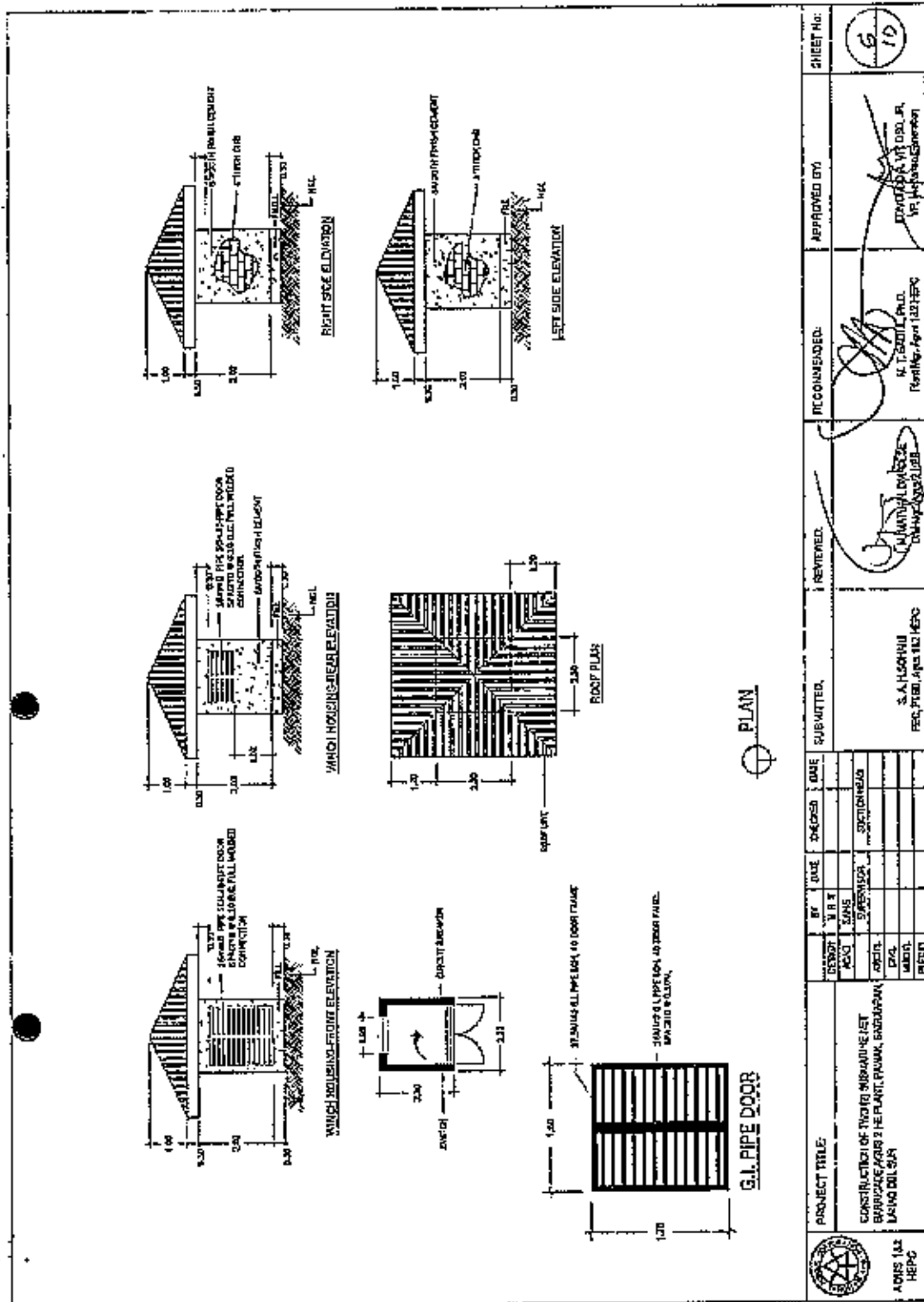
DESIGN	BY	DATE	DESIGNED	DATE	SUBMITTED	REVISIONS	RECOMMENDED	APPROVED BY	SHEET No.
PROJECT TITLE	DESIGNER								
CONSTRUCTION OF TROCKI SUBMARINE NET BARRICADE, AGUS 2 HEP PLANT, PANVAK, BAGO, CANTON, LAMMO DEL, BUP	NAME								3 10
	SALES								
	SUPERVISOR								
	DESIGN HEAD								
	APPROVAL								
	CIVIL								
	MACH								
	ELECTR								



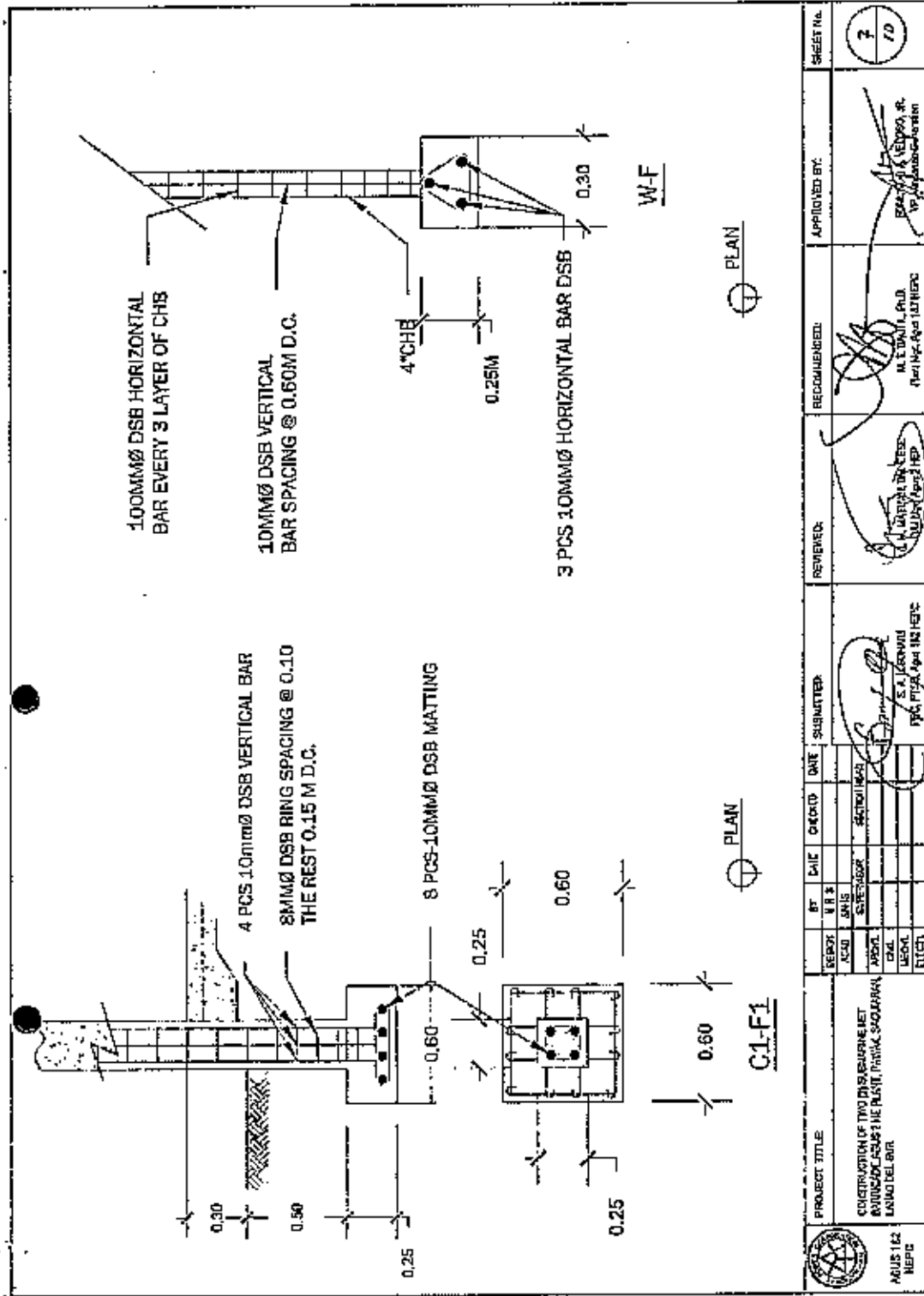
DESIGN	BY	DATE	CHECKED	DATE	SUBMITTED	REVIEWER	RECOMMENDED	APPROVED BY	SHEET No
ADAO	SAUS		SUPERVISOR		ESTYAN HENDI				4
DRK									10
DRAL									
DRM									
DRSPT									

RECOMMENDED: *[Signature]*
 APPROVED BY: *[Signature]*
 REVISOR: *[Signature]*
 REVISION: *[Signature]*

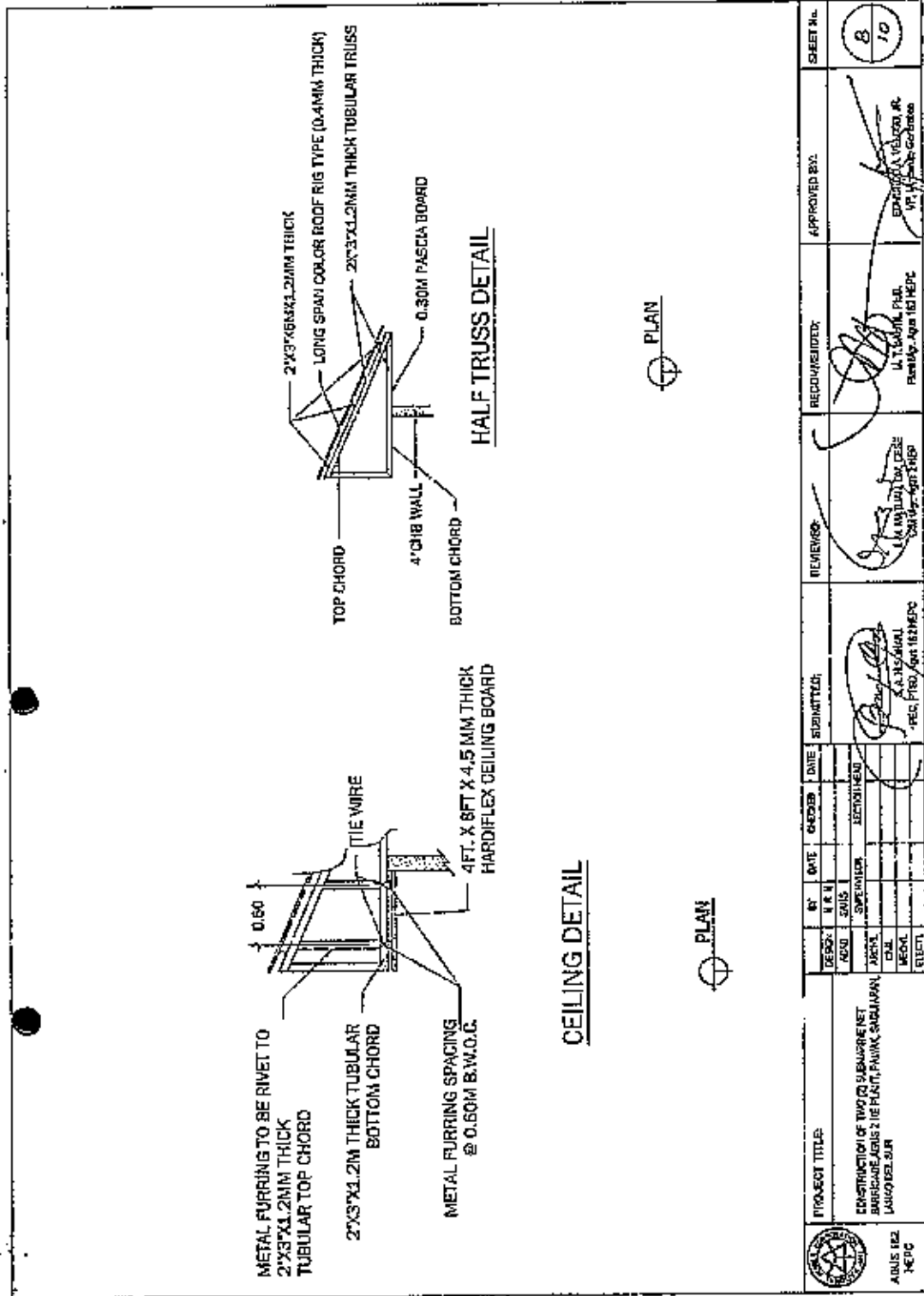




DESIGN	BY	DATE	DESIGNED	DATE	SUBMITTED	REVIEWED	RECOMMENDED	APPROVED BY	SHEET NO.
DESIGN	VERA								5
CHECK									10
SUPERVISOR									
CHECKER									
APPROVED									
REVISION									
PROJECT TITLE: CONSTRUCTION OF TROUBLE INDICATING NET BARRICADE AT AGUS 2 HEP PLANT, PANUK, BANGALAN USING G.I. PIPE									
S.A. HOSAINI PRC, P.O. Box 112, HEP									
R. T. SOUL, P.O. P.O. Box 112, HEP									
APPROVED BY: [Signature] R. T. SOUL, P.O. P.O. Box 112, HEP									



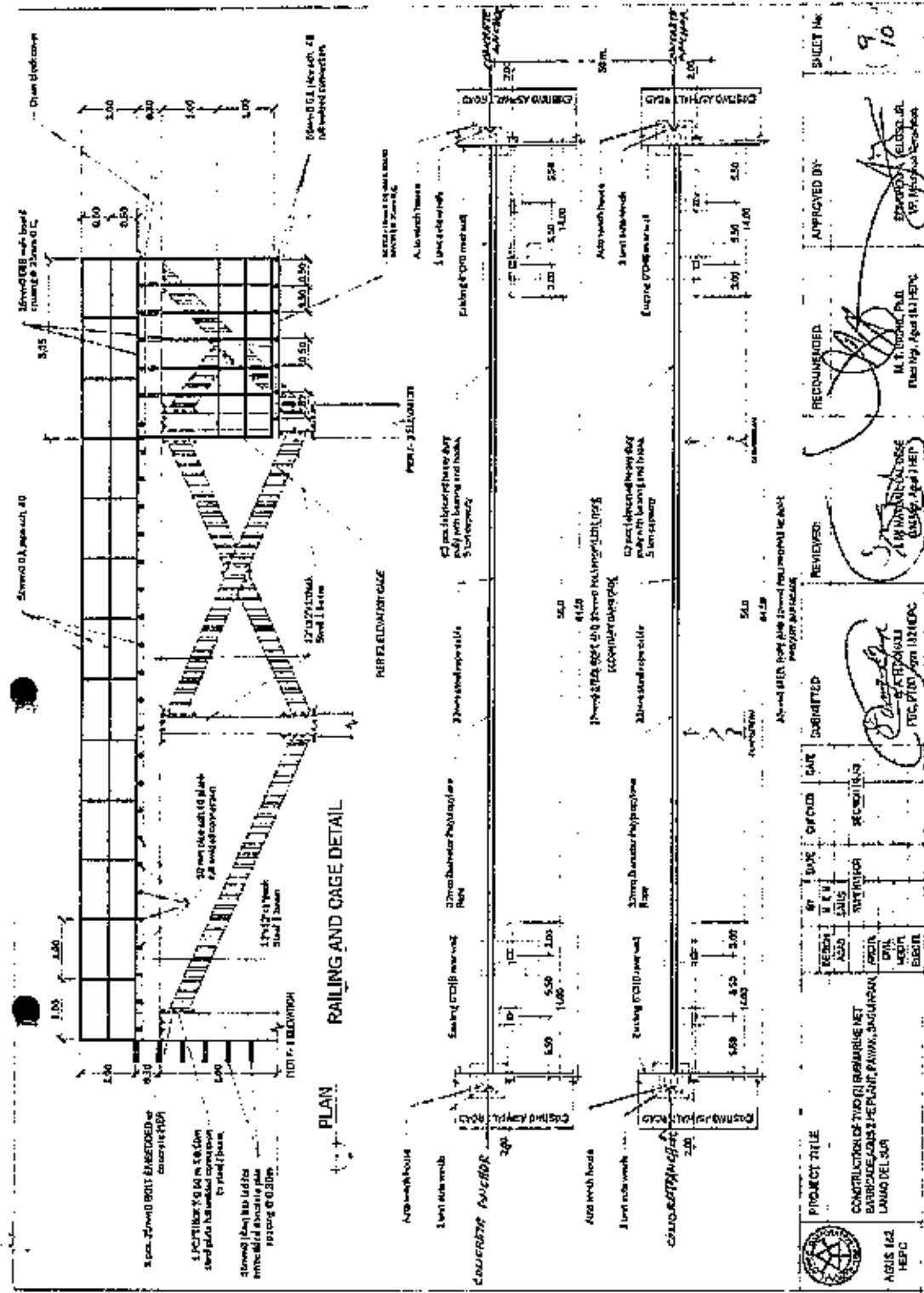
PROJECT TITLE		CONSTRUCTION OF TWO (2) SUBMERGENT BARRICADES AT AGUS 2 HEP PLANT, PANGLOSS SAO BARRAN LUNAO DEL SUR		SHEET NO.		7 / 10	
DESIGNER	DATE	CHECKED	DATE	SUBMITTED	REVIEWER	RECOMMENDED	APPROVED BY:
ACAD	11/13/2022	SAO BARRAN	11/13/2022	11/13/2022	M. E. DAVILA, PH.D. Prof. Ing. Agr. (Agr. Ing.)		ERAZO, R. VEDRERA, R. Prof. Ing. Agr. (Agr. Ing.)
APPROVED							
SCALE							
REVISION							

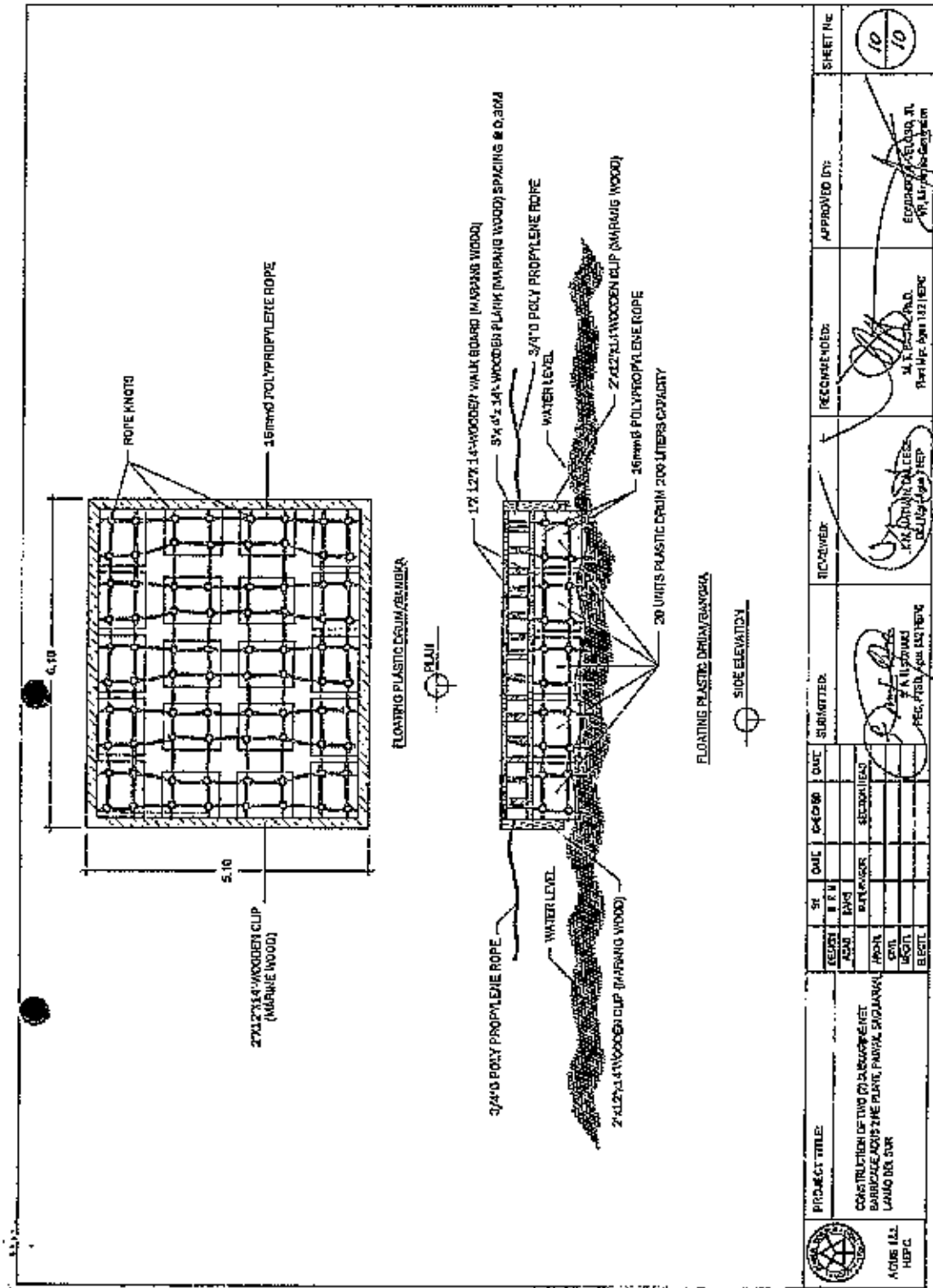


CEILING DETAIL

HALF TRUSS DETAIL

		PROJECT TITLE: CONSTRUCTION OF TWO (2) SUBMARINE NET BARRICADE AGUS 2 HE PLANT, PAUANG, SANGAJARAN, LAHONG MELUR		SHEET NO.: B / 10
DESIGN: ARCH: DRAW: MECH: ELEC:	DATE: _____ CHECKED: _____ DATE: _____ APPROVED BY: _____	REVIEWER: U. T. SUDIRJO, P.Eng. Planning - Agus 161 HEPC	RECOMMENDED BY: U. T. SUDIRJO, P.Eng. Planning - Agus 161 HEPC	APPROVED BY: EDWARD A. VELAZO JR. VP, VP - Agri-Corps





PROJECT TITLE:	ST	DATE	REVISED	SUBMITTED	RECOVERED	APPROVED BY:	SHEET No
CONSTRUCTION OF TUG TO DISCONNECT BARRICADE AND THE PLANK, MARANG SIGAMAL LANGO DEL SUR	DESIGN						10/10
	BY						
	DATE						
	SECTION/NO						
<p>APPROVED BY: <i>[Signature]</i> EQUIPMENT DELIVERED AT: <i>[Signature]</i></p> <p>REASON FOR: <i>[Signature]</i> DATE: <i>[Signature]</i></p> <p>DESIGN: <i>[Signature]</i> BY: <i>[Signature]</i> DATE: <i>[Signature]</i></p> <p>SECTION/NO: <i>[Signature]</i></p>							

Section VIII- Bill of Quantities

SECTION VIII - BILL OF QUANTITIES

BILL OF QUANTITIES

(Name of Project)

CONSTRUCTION OF TWO (2) SUBMARINE NET
BARRICADE, AGUS 2 HE PLANT, PAWAK, SAGUIARAN,
LANAO DEL SUR

(PR #)

MA-A2M22-059

Item No.	Description of Work or Materials	Unit	Estimated Quantity	Unit Price in Pesos (Words and Figures)	Total Amount
1.0	CONSTRUCTION SAFETY AND HEALTH PROGRAM	lot	1.00	(PHP)	PHP
2.0	EXCAVATION/DEMOLITION				
	2.1 PIER FOUNDATION/BACK FILLING	cu.m.	282.49	(PHP)	PHP
	2.2 GRAVEL BED (place and compact)	cu.m.	5.00	(PHP)	PHP
3.0	CONCRETE WORKS (110 CU.M.)				
	3.1 PIER 1- F1, PIER 2- F2, PIER 3- F3 AND RECONCRETING OF DAM SLOPE (90 CU.M.)	cu.m.	90.00	(PHP)	PHP
	3.2 4 UNITS CONCRETE ANCHOR (20 CU.M.) AND 4 PCS. PRECAST CONCRETE PILE 350MM X 350MM X 9.0M TO BE DRIVEN	cu.m.	20.00	(PHP)	PHP
4.0	REINFORCEMENT BAR DSB	kgs	32,068.00	(PHP)	PHP

SECTION VIII - BILL OF QUANTITIES

BILL OF QUANTITIES

(Name of Project)
 CONSTRUCTION OF TWO (2) SUBMARINE NET
 BARRICADE, AGUS 2 HE PLANT, PAWAK, SAGUIARAN,
 LANA O DEL SUR
 (PR #) **MA-A2M22-069**

Item No.	Description of Work or Materials	Unit	Estimated Quantity	Unit Price in Pesos (Words and Figures)	Total Amount
5.0	4 UNITS WINCH HOUSING, MASONRY AND PLASTERING (1 LOT)				
	4" CHB Including Column, Flooring, Wall footing mortar class 5.1 "A", G.I. Pipe door, Roof framing, Roof sheathing and Ceiling/Fascia board	lot	1.00	(PHP)	PHP
6.0	FABRICATION OF TRIPOD STEEL 1 BEAM, RAILING AND CAGE (1 LOT)	lot	1.00	(PHP)	PHP
7.0	FIXING OF TWO (2) UNITS ROPE SUBMARINE NET BARRICADE	mtrs.	37,609.00	(PHP)	PHP
8.0	TWO (2) UNITS FLOATING PLASTIC EMPTY DRUMS/ BANGKA	lot	1.00	(PHP)	PHP
9.0	INSTALLATION OF ELECTRICAL WIRE SERVICE DROP, POLE AND MOTOR WINCH	lot	1.00	(PHP)	PHP
10.0	PAINTING WORKS	sq.m.	978.42	(PHP)	PHP
					PHP

Name of Firm _____

Name and Signature of Authorized Representative _____

Designation _____

Section IX. Checklist of Technical and Financial Documents

Checklist of Technical and Financial Documents

- I. TECHNICAL COMPONENT ENVELOPE [Submit in three (3) copies- one (1) marked Original with the understanding that the Pass/Fail evaluation will be based only on the copy marked "Original"]

Class "A" Documents

Legal Documents

- (a) Valid and updated PhilGEPS Registration Certificate (Platinum Membership) (all pages) in accordance with Section 8.5.2 of the IRR; or

Technical Documents

- (b) Statement of the prospective bidder of all its ongoing government and private contracts, including contracts awarded but not yet started, if any, whether similar or not similar in nature and complexity to the contract to be bid, using NPC-MinGen Standard Form No. NPCMGNSF-INFR-01; and
- (c) Statement of the bidder's Single Largest Completed Contract (SLCC) similar to the contract to be bid, except under conditions provided under the rules, using NPC-MinGen Standard Form No. NPCMGNSF-INFR-02 supported with the following documents:
- Contract and/or Notice to Proceed;
 - For project completed within the year, submit Certificate of Completion;
 - For project completed after the lapse of one year, submit Owner's Certificate of Final Acceptance issued by the project owner other than the contractor, or a final rating of at least Satisfactory in the Constructor's Performance Evaluation System (CPES);
 - In case of contracts with the private sector, an equivalent document (Ex. Official receipt) shall be submitted.
- (d) and Special PCAB License in case of Joint Ventures; and registration for the type and cost of the contract to be bid; and
- (e) Original copy of Bid Security. If in the form of a Surety Bond, using NPC-MinGen Standard Form No. NPCMGNSF-INFR-03a, submit also a certification issued by the Insurance Commission; or Original copy of Notarized Bid Securing Declaration using NPC-MinGen Standard Form No. NPCMGNSF-INFR-03b; and
- (f) Project Requirements, which shall include the following:
- a. Organizational chart for the contract to be bid using NPC-MinGen Standard Form No. NPCMGNSF-INFR-04;
 - b. List of contractor's key personnel (e.g., Project Manager, Project Engineers, Materials Engineers, and Foremen), to be assigned to the contract to be bid, with their complete qualification and experience

- data, using NPC-MinGen Standard Form No. NPCMGNSF-INFR-05, 6a, 6b & 07;
- c. List of contractor's major equipment units, which are owned, leased, and/or under purchase agreements, supported by proof of ownership or certification of availability of equipment from the equipment lessor/vendor for the duration of the project, as the case may be, using NPC-MinGen Standard Form No. NPCMGNSF-INFR-08 and its supporting documents; and
- (g) Original duly signed Omnibus Sworn Statement (OSS), using any of the following NPC-MinGen Standard Forms No.:
NPCMGNSF-INFR-09a – for Sole Proprietorship;
or
NPCMGNSF-INFR-09b – for Partnership/Cooperative/Corporation/
Joint Venture with the following supporting documents:
- and if applicable, Original Notarized Secretary's Certificate in case of a corporation, partnership, or cooperative; or Original Special Power of Attorney of all members of the joint venture giving full power and authority to its officer to sign the OSS and do acts to represent the Bidder.

Financial Documents

- (h) The prospective bidder's computation of Net Financial Contracting Capacity (NFCC) using NPC-MinGen Standard Form No. NPCMGNSF-INFR-10.

Class "B" Documents

- (i) If applicable, duly signed joint venture agreement (JVA) in accordance with RA No. 4566 and its IRR in case the joint venture is already in existence, using NPC-MinGen Standard Form No. NPCMGNSF-INFR-11;
or
duly notarized statements from all the potential joint venture partners stating that they will enter into and abide by the provisions of the JVA in the instance that the bid is successful.

II. FINANCIAL COMPONENT ENVELOPE [Submit in three (3) copies- one (1) marked Original with the understanding that the Pass/Fail evaluation will be based only on the copy marked "Original"]

- (j) Original of duly signed (each and every page) and accomplished Financial Bid Form, using NPC-MinGen Standard Form No. NPCMGNSF-INFR-12;
and
Other documentary requirements under RA No. 9184
- (k) Original of duly signed (each and every page) Bid Prices in the Bill of Quantities, using given form in Section VIII; and
- (l) Duly signed (each and every page) and accomplished Detailed Estimates Form using NPC-MinGen Standard Form No. NPCMGNSF-INFR-13, including a summary sheet indicating the unit prices of construction materials, labor rates, and equipment rentals used in coming up with the Bid using NPC form NPCMGNSF-INFR-14; and

- (m) Cash Flow by Quarter or Month, as applicable (duly signed each and every page)

STANDARD BIDDING FORMS

NPC-MINDANAO GENERATION

- NPCMGNSF-INFR-01 - List of all Ongoing Government & Private Construction Contracts Including Contracts Awarded but not yet Started
- NPCMGNSF-INFR-02 - Statement of the Bidder's Single Largest Completed Contract (SLCC) similar to the contract to be bid
- NPCMGNSF-INFR-03a - Form of Bid Security : Surety Bond
- NPCMGNSF-INFR-03b - Bid Securing Declaration Form
- NPCMGNSF-INFR-04 - Contractor's Organizational Chart for the Project
- NPCMGNSF-INFR-05 - List of Key Personnel Proposed to be Assigned to the Project
- NPCMGNSF-INFR-6a - Key Personnel's Certificate of Employment (Professional Personnel)
- NPCMGNSF-INFR-6b - Key Personnel's Certificate of Employment (Construction Safety and Health Practitioner)
- NPCMGNSF-INFR-07 - Key Personnel's Bio-Data
- NPCMGNSF-INFR-08 - List of Equipment, Owned or Leased and/or under Purchase Agreement, Pledged to the Proposed Project
- NPCMGNSF-INFR-09a - Omnibus Sworn Statement (Sole Proprietorship)
- NPCMGNSF-INFR-09b - Omnibus Sworn Statement (Partnership/ Cooperative/Corporation//Joint Venture)
- NPCMGNSF-INFR-10 - Computation of Net Financial Contracting Capacity (NFCC)
- NPCMGNSF-INFR-11 - Joint Venture Agreement
- NPCMGNSF-INFR-12 - Bid Form
- NPCMGNSF-INFR-13 - Detailed Cost Estimate Form
- NPCMGNSF-INFR-14 - Summary Sheets of Materials Prices, Labor Rates and Equipment Rental Rates

BID DOCUMENTS

NAME OF PROJECT: _____

SECTION IX- CHECKLIST OF TECHNICAL & FINANCIAL DOCUMENTS

PR NO./REF. NO.: 1

Standard Form Number : NPCMGNSE-INFR-02

The Statement of the Bidder's Single Largest Completed Contract (SLCC) similar to the contract to be bid

Business Name : _____
Business Address : _____

Name of Contract	a. Owner's Name b. Address c. Telephone Nos.	Nature of Work	Contractor's Role		a. Amount at Award b. Amount at Completion c. Duration	a. Date Awarded b. Contract Effectivity Date Completed c. Date Completed
			Description	%		

Note: The bidder must state only one (1) Single Largest Completed Contract (SLCC) similar to the contract to be bid. Stating two (2) or more will disqualify his bid. This Statement shall be supported with:

1. Contract and Notice to Proceed
2. Certificate of Completion (for project completed within the year), or Owner's Certificate of Final Acceptance (for project completed after the lapse of one year) Issued by the project owner other than the contractor, or a final rating of at least Satisfactory in the Constructor's Performance Evaluation System (CPES). In case of contracts in the private sector, an equivalent document (Ex. Official Receipt) shall be accepted.

Submitted by : _____
 {Printed Name & Signature}

Designation : _____
Date : _____

Standard Form No: NPCMGNSF-INFR-03a

FORM OF BID SECURITY (SURETY BOND)

BOND NO.: _____ DATE BOND EXECUTED: _____

By this bond, We (Name of Bidder) (hereinafter called "the Principal") and (Name of Surety) of (Name of Country of Surety), authorized to transact business in the Philippines (hereinafter called "the Employer") as Obligee, in the sum of amount in words & figures as prescribed in the bidding documents, callable on demand, for the payment of which sum, well and truly to be made, we, the said Principal and Surety bind ourselves, our successors and assigns, jointly and severally, firmly by these presents.

SEALED with our seals and dated this _____ day of _____ 20_____

WHEREAS, the Principal has submitted a written Bid to the Employer dated the _____ day of _____ 20_____, for the _____ (hereinafter called "the Bid").

NOW THEREFORE, the conditions of this obligation are:

- 1) If the Bidder withdraws his Bid during the period of bid validity specified in the Bidding Documents; or
- 2) If the Bidder does not accept the correction of arithmetical errors of his bid price in accordance with the Instructions to Bidder; or
- 3) If the Bidder, having determined as the LCB, fails or refuses to submit the required tax clearance, latest income and business tax returns and PhilGEPS registration certificate within the prescribed period; or
- 4) If the bidder having been notified of the acceptance of his bid and award of contract to him by the Entity during the period of bid validity:
 - a) Fails or refuses to execute the Contract; or
 - b) Fails or refuses to submit the required valid JVA, if applicable; or
 - c) Fails or refuses to furnish the Performance Security in accordance with the Instruction to Bidders;

Then this obligation shall remain in full force and effect, otherwise it shall be null and void.

PROVIDED HOWEVER, that the Surety shall not be:

- a) Liable for a grater sum than the specified penalty of this bond, nor
- b) Liable for a greater sum that the difference between the amount of the said Principal's Bid and the amount of the Bid that is accepted by the Employer.

Standard Form No: NPCMGNSF-INFR-03a

Page 2 of 2

This Surety executing this instrument hereby agrees that its obligation shall be valid for 120 calendar days after the deadline for submission of Bids as such deadline is stated in the Instructions to Bidders or as it may be extended by the Employer, notice of which extension(s) to the Surety is hereby waived.

PRINCIPAL

SURETY

SIGNATURE(S)

SIGNATURE(S)

NAME(S) AND TITLE (S)

NAME(S)

SEAL

SEAL

Standard Form No: NPCMGNSF-INFR-03b

REPUBLIC OF THE PHILIPPINES)
CITY OF _____) S.S.

BID SECURING DECLARATION
Project Identification No.: *[Insert number]*

To: *[Insert name and address of the Procuring Entity]*

I/We, the undersigned, declare that:

1. I/We understand that, according to your conditions, bids must be supported by a Bid Security, which may be in the form of a Bid Securing Declaration.
2. I/We accept that: (a) I/we will be automatically disqualified from bidding for any procurement contract with any procuring entity for a period of two (2) years upon receipt of your Blacklisting Order; and, (b) I/we will pay the applicable fine provided under Section 6 of the Guidelines on the Use of Bid Securing Declaration, within fifteen (15) days from receipt of the written demand by the procuring entity for the commission of acts resulting to the enforcement of the bid securing declaration under Sections 23.1(b), 34.2, 40.1 and 69.1, except 69.1(f), of the IRR of RA No. 9184; without prejudice to other legal action the government may undertake.
3. I/We understand that this Bid Securing Declaration shall cease to be valid on the following circumstances:
 - a. Upon expiration of the bid validity period, or any extension thereof pursuant to your request;
 - b. I am/we are declared ineligible or post-disqualified upon receipt of your notice to such effect, and (i) I/we failed to timely file a request for reconsideration or (ii) I/we filed a waiver to avail of said right; and
 - c. I am/we are declared the bidder with the Lowest Calculated Responsive Bid, and I/we have furnished the performance security and signed the Contract.

IN WITNESS WHEREOF, I/We have hereunto set my/our hand/s this ____ day of *[month]* *[year]* at *[place of execution]*.

*[Insert NAME OF BIDDER OR ITS AUTHORIZED
REPRESENTATIVE]*
[Insert signatory's legal capacity]
Affiant

[Jurat]

[Format shall be based on the latest Rules on Notarial Practice]

Standard Form No: NPCMGNSF-INFR-04

CONTRACTOR'S ORGANIZATIONAL CHART FOR THE CONTRACT

Submit Copy of the Organizational Chart that the Contractor intends to use to execute the Contract if awarded to him. Indicate in the chart the names of the Project Manager, Project Engineer, Foreman and other Key Engineering Personnel.

Attach the required Proposed Organizational Chart for the Contract as stated above

NOTES:

1. *This organization chart should represent the "Contractor's Organization" required for the Project, and not the organizational chart of the entire firm.*
2. *Each such nominated engineer/key personnel shall comply with and submit their complete qualification and experience data.*
3. *All these are required to be in the Technical Envelope of the Bidder.*

BID DOCUMENTS
SECTION IX- CHECKLIST OF TECHNICAL AND
FINANCIAL DOCUMENTS

NAME OF PROJECT: Construction of Substation Net Barricade at Agus 2 HEP
PR NO./REF. NO.: MA-A2M22-059/JNFR2022-AG2-053

Standard Form Number : NPCMGN5F-JNFR-05

LIST OF KEY PERSONNEL PROPOSED TO BE ASSIGNED TO THE CONTRACT
(Based on the Minimum Key Personnel Required in the Bidding Documents)

Business Name : _____
Business : _____

		DESIGNATION			
1. Name	_____	_____	_____	_____	_____
2. Address	_____	_____	_____	_____	_____
3. Date of Birth	_____	_____	_____	_____	_____
4. Employed Since	_____	_____	_____	_____	_____
5. Experience	_____	_____	_____	_____	_____
6. Previous Employment	_____	_____	_____	_____	_____
7. Education	_____	_____	_____	_____	_____
8. PRC License	_____	_____	_____	_____	_____

Required Attachments during Postqualification:

1. Valid PRC License of the (professionally personnel)
2. Certificate of Training with accreditation from DOLE of the Construction Safety and Health Officer
3. TESDA Training Certificate (MC II) of Welder or Electrician, whichever is applicable
4. Copy of Diploma and/or Service Record/Certificate of Employment of previous and/or current employer of Foreman, Welder, Plumber or Electrician, whichever is applicable shall be submitted during post qualification by the winning bidder.

Submitted by: _____
 (Printed name & signature)

Designation: _____
 Date: _____

One of the requirements from the bidder to be included in its Technical Envelope is a list of contractor's key personnel (based on the minimum key personnel required in the bidding documents) to be assigned to the contract to be bid, with their complete qualification and experience data (including the key personnel's signed written commitment to work for the project once awarded the contract).

Standard Form No: NPCMGNSF-INFR-06a

**KEY PERSONNEL'S CERTIFICATE OF EMPLOYMENT
(PROFESSIONAL PERSONNEL)**

Issuance Date

THE VICE PRESIDENT
National Power Corporation
Mindanao Generation
Maria Cristina, Iligan City

Dear Sir:

I am (Name of Nominee) a Licensed _____ Engineer with
Professional License No. _____ Issued on _____ at _____
(date of issuance) (place
of issuance)

I hereby certify that (Name of Bidder) Has engaged my services as
(Designation) _____ for the (Name of Project) _____, if awarded to it.

As (Designation) _____, I supervised the following completed projects
Similar to the contract under bidding:

NAME OF PROJECT	OWNER	COST	DATE COMPLETED
_____	_____	_____	_____
_____	_____	_____	_____
_____	_____	_____	_____

At present, I am supervising the following projects:

NAME OF PROJECT	OWNER	COST	DATE COMPLETED
_____	_____	_____	_____
_____	_____	_____	_____
_____	_____	_____	_____

In case of my separation for any reason whatsoever from the above-mentioned Contractor, I shall notify the National Power Corporation at least twenty one (21) days before the effective date of separation.

As (Designation) _____, I know I will have to stay in the job site all the time to supervise and manage the Contract works to the best of my ability, and aware that I am authorized to handle only one (1) contract at a time.

One of the requirements from the bidder to be included in its Technical Envelope is a list of contractor's key personnel (viz. Project Manager, Project Engineer, Safety & Health Practitioner, Foreman, etc.), to be assigned to the contract to be bid, with their complete qualification and experience data (including the key personnel's signed written commitment to work for the project once awarded the contract).

Standard Form No: NPCMGNSF-INFR-06a

Page 2 of 2

I do not allow the use of my name for the purpose of enabling the above-mentioned Contractor to qualify for the Contract without any firm commitment on my part to assume the post of (Designation) therefore, if the contract is awarded to him since I understand that to do so will be a sufficient ground for my disqualification as (Designation) in any future National Power Corporation bidding or employment with any Contractor doing business with the National Power Corporation.

(Name and Signature)
AFFIANT

REPUBLIC OF THE PHILIPPINES)
City/Municipality of _____)S.S.

SUBSCRIBED AND SWORN TO before me this _____, day of _____20____,
affiant exhibiting to me his/her Community Tax Certificate No. _____ issued on
_____ at _____, Philippines.

Notary Public
Until 31 December 20 _____
PTR No. _____
Issued at: _____
Issued on: _____
TIN No. _____

Doc. No. _____
Page No. _____
Book No. _____
Series of _____

One of the requirements from the bidder to be included in its Technical Envelope is a list of contractor's key personnel (viz. Project Manager, Project Engineer, Safety & Health Practitioner, Foremen, etc.), to be assigned to the contract to be bid, with their complete qualification and experience data (including the key personnel's signed written commitment to work for the project once awarded the contract).

Standard Form No: NPCMGNSF-INFR-06b

**KEY PERSONNEL'S CERTIFICATE OF EMPLOYMENT
(CONSTRUCTION SAFETY AND HEALTH PRACTITIONER)**

Issuance Date

THE VICE PRESIDENT

National Power Corporation
Mindanao Generation
Maria Cristina, Iligan City

Dear Sir:

I am (Name of Nominee) a Licensed _____ Engineer with
Professional License No. _____ Issued on _____ at _____
(date of issuance) (place
of issuance)

I hereby certify that (Name of Bidder) Has engaged my services as
(Designation) for the (Name of Project), if awarded to it.

As (Designation), I supervised the following completed projects
Similar to the contract under bidding:

NAME OF PROJECT	OWNER	COST	DATE COMPLETED
_____	_____	_____	_____
_____	_____	_____	_____
_____	_____	_____	_____

At present, I am supervising the following projects:

NAME OF PROJECT	OWNER	COST	DATE COMPLETED
_____	_____	_____	_____
_____	_____	_____	_____
_____	_____	_____	_____

In case of my separation for any reason whatsoever from the above-mentioned Contractor, I shall notify the National Power Corporation at least twenty one (21) days before the effective date of separation.

As Safety and Health Practitioner, I know I will have to stay in the job site all the time and aware that I am authorized to handle only one (1) contract at a time.

One of the requirements from the bidder to be included in its Technical Envelope is a list of contractor's key personnel (viz. Project Manager, Project Engineer, Safety & Health Practitioner, Foreman, etc.), to be assigned to the contract to be bid, with their complete qualification and experience data (including the key personnel's signed written commitment to work for the project once awarded the contract).

I do not allow the use of my name for the purpose of enabling the above-mentioned Contractor to qualify for the Contract without any firm commitment on my part to assume the post of Safety and Health Practitioner, if the contract is awarded to him since I understand that to do so will be a sufficient ground for my disqualification as Safety and Health Practitioner in any future National Power Corporation bidding or employment with any Contractor doing business with the National Power Corporation.

(Name and Signature)
AFFIANT

REPUBLIC OF THE PHILIPPINES)
City/Municipality of _____)S.S.

SUBSCRIBED AND SWORN TO before me this _____, day of _____ 20____,
affiant exhibiting to me his/her Community Tax Certificate No. _____ Issued on
_____ at _____, Philippines.

Notary Public
Until 31 December 20 _____
PTR No. _____
Issued at: _____
Issued on: _____
TIN No. _____

Doc. No. _____
Page No. _____
Book No. _____
Series of _____

One of the requirements from the bidder to be included in its Technical Envelope is a list of contractor's key personnel (viz. Project Manager, Project Engineer, Safety & Health Practitioner, Foreman, etc.), to be assigned to the contract to be bid, with their complete qualification and experience data (including the key personnel's signed written commitment to work for the project once awarded the contract).

Standard Form No: NPCMGNSF-INFR-07

KEY PERSONNEL (FORMAT OF BIO-DATA)

Give the detailed information of the following personnel who are scheduled to be assigned as full-time staff for the project. Fill up a form for each person.

1. Name : _____
2. Date of Birth : _____
3. Nationality : _____
4. Education and Degrees : _____
5. Specialty : _____
6. Registration : _____
7. Length of Service with the Firm : _____ Year
 from _____ (months) _____ (year)
 To _____ (months) _____ (year)
8. Years of Experience : _____

9. If item 7 is less than the required number of years stated in BDS Section III- ITB Clause 10.4, give name and length of service with previous employers to satisfy the required number of years of experience within the last ten (10) years (attached additional sheet/s), if necessary:

<u>Name and Address of Employer</u>	<u>Length of Service</u>
_____	Year(s) from _____ to _____
_____	Year(s) from _____ to _____
_____	Year(s) from _____ to _____

10. Experience:

This should cover the past ten (10) years of experience. (Attached as many pages as necessary to show involvement of personnel in projects using the format below).

One of the requirements from the bidder to be included in its Technical Envelope is a list of contractor's key personnel (viz. Project Manager, Project Engineer, Safety & Health Practitioner, Foreman, etc.), to be assigned to the contract to be bid, with their complete qualification and experience data (including the key personnel's signed written commitment to work for the project once awarded the contract).

1. Name : _____
2. Name and Address of Owner : _____
3. Name and Address of the Owner's Engineer (Consultant) : _____
4. Indicate the Features of Project (particulars of the project components and any other particular interest connected with the project) : _____
5. Contract Amount Expressed in Philippine Currency : _____
6. Position : _____
7. Structures for which the employee was responsible : _____
8. Assignment Period : from _____ (months) _____ (years)
to _____ (months) _____ (years)

Name and Signature of
Employee

It is hereby certified that the above personnel can be assigned to this project, if the contract is awarded to our company.

(Place and Date)

(The Authorized Representative)

One of the requirements from the bidder to be included in its Technical Envelope is a list of contractor's key personnel (viz. Project Manager, Project Engineer, Safety & Health Practitioner, Foreman, etc.), to be assigned to the contract to be bid, with their complete qualification and experience data (including the key personnel's signed written commitment to work for the project once awarded the contract).

BID DOCUMENTS

NAME OF PROJECT:

SECTION IX- CHECKLIST OF TECHNICAL &
FINANCIAL DOCUMENTS

PR NO./REF. NO.:

Standard Form Number : NPCMGN5F-INFR - 08

**LIST OF EQUIPMENT, OWNED OR LEASED AND/OR UNDER PURCHASE AGREEMENTS
(Based on the Minimum Equipment Required in the Bidding Documents)**

Business Name : _____
Business : _____

Description	Model/Year	Capacity/ Performance / Size	Plate No.	Motor No. / Body No.	Location	Condition	Proof of Ownership / Lessor or Vendor
A. Owned							
i.							
ii.							
iii.							
iv.							
B. Leased							
i.							
ii.							
iii.							
iv.							
C. Under Purchased Agreements							
i.							
ii.							
iii.							
iv.							

Submitted by: _____

(Printed name & Signature)

Designation: _____

Date: _____

One of the requirements from the bidder to be included in its Technical Envelope is the list of its equipment units pledged for the contract to be bid, based on minimum equipment required in the bidding docs, which are owned (supported by proofs of ownership), leased, and/or under purchase agreements (with corresponding engine numbers, chassis numbers and/or serial numbers), supported by certification of availability of equipment from the equipment lessor/vendor for the duration of the project.

Omnibus Sworn Statement (Revised)
(SOLE PROPRIETORSHIP)

REPUBLIC OF THE PHILIPPINES)
CITY/MUNICIPALITY OF _____) S.S.

AFFIDAVIT

I, [Name of Affiant], of legal age, [Civil Status], [Nationality], and residing at [Address of Affiant], after having been duly sworn in accordance with law, do hereby depose and state that:

1. I am the sole proprietor or authorized representative of [Name of Bidder] with office address at [address of Bidder];
2. As the owner and sole proprietor, or authorized representative of [Name of Bidder], I have full power and authority to do, execute and perform any and all acts necessary to participate, submit the bid, and to sign and execute the ensuing contract for [Name of the Project] of the National Power Corporation-Mindanao Generation, as shown in the attached duly notarized Special Power of Attorney;
3. [Name of Bidder] is not "blacklisted" or barred from bidding by the Government of the Philippines or any of its agencies, offices, corporations, or Local Government Units, foreign government/foreign or international financing institution whose blacklisting rules have been recognized by the Government Procurement Policy Board, by itself or by relation, membership, association, affiliation, or controlling interest with another blacklisted person or entity as defined and provided for in the Uniform Guidelines on Blacklisting;
4. Each of the documents submitted in satisfaction of the bidding requirements is an authentic copy of the original, complete, and all statements and information provided therein are true and correct;
5. [Name of Bidder] is authorizing the Head of the Procuring Entity or its duly authorized representative(s) to verify all the documents submitted;
6. The owner or sole proprietor is not related to the Head of the Procuring Entity, members of the Bids and Awards Committee (BAC), the Technical Working Group, and the BAC Secretariat, the head of the Project Management Office or the end-user unit, and the project consultants by consanguinity or affinity up to the third civil degree;
7. [Name of Bidder] complies with existing labor laws and standards; and
8. [Name of Bidder] is aware of and has undertaken the responsibilities as a Bidder in compliance with the Philippine Bidding Documents, which includes:
 - a. Carefully examining all of the Bidding Documents;
 - b. Acknowledging all conditions, local or otherwise, affecting the implementation of the Contract;

Standard Form No: NPCMGNSF-INFR-09a

Page 2 of 2

- c. Making an estimate of the facilities available and needed for the contract to be bid, if any; and
 - d. Inquiring or securing Supplemental/Bid Bulletin(s) issued for the *[Name of the Project]*.
9. *[Name of Bidder]* did not give or pay directly or indirectly, any commission, amount, fee, or any form of consideration, pecuniary or otherwise, to any person or official, personnel or representative of the government in relation to any procurement project or activity.
10. In case advance payment was made or given, failure to perform or deliver any of the obligations and undertakings in the contract shall be sufficient grounds to constitute criminal liability for Swindling (Estafa) or the commission of fraud with unfaithfulness or abuse of confidence through misappropriating or converting any payment received by a person or entity under an obligation involving the duty to deliver certain goods or services, to the prejudice of the public and the government of the Philippines pursuant to Article 315 of Act No. 3815 s. 1930, as amended, or the Revised Penal Code.

IN WITNESS WHEREOF, I have hereunto set my hand this ___ day of ___, 20__ at _____, Philippines.

[Insert NAME OF BIDDER OR ITS AUTHORIZED REPRESENTATIVE]

[Insert signatory's legal capacity]
Affiant

[Jurat]

[Format shall be based on the latest Rules on Notarial Practice]

Standard Form No: NPCMGNSF-INFR-09b

Omnibus Sworn Statement (Revised) PARTNERSHIP/COOP/CORP/JOINT VENTURE

REPUBLIC OF THE PHILIPPINES)
CITY/MUNICIPALITY OF _____) S.S.

AFFIDAVIT

I, [Name of Affiant], of legal age, [Civil Status], [Nationality], and residing at [Address of Affiant], after having been duly sworn in accordance with law, do hereby depose and state that:

1. I am the duly authorized and designated representative of [Name of Bidder] with office address at [address of Bidder];
2. I am granted full power and authority to do, execute and perform any and all acts necessary to participate, submit the bid, and to sign and execute the ensuing contract for [Name of the Project] of the National Power Corporation-Mindanao Generation, as shown in the attached [state title of attached document showing proof of authorization (e.g., duly notarized Secretary's Certificate, Board/Partnership Resolution, or Special Power of Attorney, whichever is applicable)];
3. [Name of Bidder] is not "blacklisted" or barred from bidding by the Government of the Philippines or any of its agencies, offices, corporations, or Local Government Units, foreign government/foreign or international financing institution whose blacklisting rules have been recognized by the Government Procurement Policy Board, by itself or by relation, membership, association, affiliation, or controlling interest with another blacklisted person or entity as defined and provided for in the Uniform Guidelines on Blacklisting;
4. Each of the documents submitted in satisfaction of the bidding requirements is an authentic copy of the original, complete, and all statements and information provided therein are true and correct;
5. [Name of Bidder] is authorizing the Head of the Procuring Entity or its duly authorized representative(s) to verify all the documents submitted;
6. *[If a partnership or cooperative:]* None of the officers and members of [Name of Bidder]'s related to the Head of the Procuring Entity, members of the Bids and Awards Committee (BAC), the Technical Working Group, and the BAC Secretariat, the head of the Project Management Office or the end-user unit, and the project consultants by consanguinity or affinity up to the third civil degree;

[If a corporation or joint venture:] None of the officers, directors, and controlling stockholders of [Name of Bidder]'s related to the Head of the Procuring Entity, members of the Bids and Awards Committee (BAC), the Technical Working Group, and the BAC Secretariat, the head of the Project Management Office or the end-user unit, and the project consultants by consanguinity or affinity up to the third civil degree;

Standard Form No: NPCMGNSF-INFR-09b

7. [Name of Bidder] complies with existing labor laws and standards; and
8. [Name of Bidder] is aware of and has undertaken the responsibilities as a Bidder in compliance with the Philippine Bidding Documents, which includes:
 - a. Carefully examining all of the Bidding Documents;
 - b. Acknowledging all conditions, local or otherwise, affecting the implementation of the Contract;
 - c. Making an estimate of the facilities available and needed for the contract to be bid, if any; and
 - d. Inquiring or securing Supplemental/Bid Bulletin(s) issued for the [Name of the Project].
9. [Name of Bidder] did not give or pay directly or indirectly, any commission, amount, fee, or any form of consideration, pecuniary or otherwise, to any person or official, personnel or representative of the government in relation to any procurement project or activity.
10. In case advance payment was made or given, failure to perform or deliver any of the obligations and undertakings in the contract shall be sufficient grounds to constitute criminal liability for Swindling (Estafa) or the commission of fraud with unfaithfulness or abuse of confidence through misappropriating or converting any payment received by a person or entity under an obligation involving the duty to deliver certain goods or services, to the prejudice of the public and the government of the Philippines pursuant to Article 315 of Act No. 3815 s. 1930, as amended, or the Revised Penal Code.

IN WITNESS WHEREOF, I have hereunto set my hand this ___ day of ___, 20__ at _____, Philippines.

[Insert NAME OF BIDDER OR ITS AUTHORIZED REPRESENTATIVE]

[Insert signatory's legal capacity]

Affiant

[Jurat]

[Format shall be based on the latest Rules on Notarial Practice]

Standard Form No: NPCMGNSF-INFR-10

NET FINANCIAL CONTRACTING CAPACITY (NFCC)

A. Summary of the Bidder's/Contractor's assets and liabilities on the basis of the income tax return and audited financial statement for the immediately preceding calendar year are:

	Year 20
1. Total Assets	
2. Current Assets	
3. Total Liabilities	
4. Current Liabilities	
5. Net Worth (1-3)	
6. Net Working Capital (2-4)	

B. The Net Financial Contracting Capacity (NFCC) based on the above data is computed as follows:

NFCC = [(Current assets minus current liabilities) x 15] minus the value of all outstanding or uncompleted portions of the projects under ongoing contracts, including awarded contracts yet to be started coinciding with the contract for this Project.

NFCC – P _____

Herewith attached is certified true copy of the audited financial statement, stamped "RECEIVED" by the BIR or BIR authorized collecting agent for the immediately preceding calendar year.

Submitted by:

Name of Bidder/Contractor

Signature of Authorized Representative

Date: _____

Standard Form No: NPCMGNSF-INFR-11

JOINT VENTURE AGREEMENT

KNOW ALL MEN BY THESE PRESENTS:

That this JOINT VENTURE AGREEMENT is entered in to by and between:
_____, of legal age, (civil status) _____, authorized representative of
_____ and a resident of _____.

- and -

_____, of legal age, (civil status) _____, authorized representative of
_____ and a resident of _____.

That both parties agree to join together their capital, manpower, equipment, and other resources and efforts to enable the Joint Venture to participate in the Bidding and Undertaking of the hereunder stated Contract of the National Power Corporation.

NAME OF FIRM

CAPITAL CONTRIBUTION

That the capital contribution of each member firm:

NAME OF FIRM

CAPITAL CONTRIBUTION

1
2

DND
DHP

That both parties agree to be jointly and severally liable for their participation in the Bidding and Undertaking of the said contract.

That both parties agree that _____ and/or _____ shall be the Official Representative/s of the Joint Venture, and are granted full power and authority to do, execute and perform any and all acts necessary and/or to represent the Joint Venture in the Bidding and Undertaking of the said contract, as fully and effectively and the Joint Venture may do and if personally present with full power of substitution and revocation.

That this Joint Venture Agreement shall remain in effect only for the above stated Contract until terminated by both parties.

Name & Signature of Authorized
Representative

Official Designation

Name of Firm

Name & Signature of
Authorized Representative

Official Designation

Name of Firm

Witnesses

If the bidder is a joint venture, one of the requirements is the submission of a valid joint venture agreement.

ACKNOWLEDGEMENT

BEFORE ME, a Notary Public for and in _____, Philippines, this _____ day of _____, 20____, personally appeared _____, authorized representative, of _____ with Community Tax Certificate No. _____, issued at _____, on _____, AND _____ authorized representative, of _____ with Community Tax Certificate No. _____, issued at _____, on _____ known to me to be the same person who executed the foregoing instrument consisting of two (2) pages, including the page whereon the acknowledgements are written, all pages signed by both parties and their instrumental witnesses and they acknowledged before me that the same are their free and voluntary acts and deeds and that of the Corporations they represents.

WITNESS MY HAND AND NOTARIAL SEAL, at the place and on the date first above written.

Notary Public
Until 31 December 20 _____
PTR No. _____
Issued at: _____
Issued on: _____
TIN No. _____

Doc. No. _____
Page No. _____
Book No. _____
Series of _____

If the bidder is a joint venture, one of the requirements is the submission of a valid joint venture agreement.
Standard Form No: NPCMGNSF-INFR-12

Bid Form for the Procurement of Infrastructure Projects

BID FORM

Date : _____

Project Identification No. : _____

To: **The Vice President**
National Power Corporation
Mindanao Generation
Maria Cristina, Iligan City

Having examined the Philippine Bidding Documents (PBDs) including the Supplemental or Bid Bulletin Numbers [insert numbers], the receipt of which is hereby duly acknowledged, we, the undersigned, declare that:

- a. We have no reservation to the PBDs, including the Supplemental or Bid Bulletins, for the Procurement Project: [insert name of contract];
- b. We offer to execute the Works for this Contract in accordance with the PBDs;
- c. The total price of our Bid in words and figures, excluding any discounts offered below is: [insert information];
- d. The discounts offered and the methodology for their application are: [insert information];
- e. The total bid price includes the cost of all taxes, such as, but not limited to: [specify the applicable taxes, e.g. (i) value added tax (VAT), (ii) income tax, (iii) local taxes, and (iv) other fiscal levies and duties], which are itemized herein and reflected in the detailed estimates,
- f. Our Bid shall be valid within the a period stated in the PBDs, and it shall remain binding upon us at any time before the expiration of that period;
- g. If our Bid is accepted, we commit to obtain a Performance Security in the amount of [insert percentage amount] percent of the Contract Price for the due performance of the Contract, or a Performance Securing Declaration in lieu of the the allowable forms of Performance Security, subject to the terms and conditions of issued GPPB guidelines¹ for this purpose;
- h. We are not participating, as Bidders, in more than one Bid in this bidding process, other than alternative offers in accordance with the Bidding Documents;
- i. We understand that this Bid, together with your written acceptance thereof included in your notification of award, shall constitute a binding contract between us, until a formal Contract is prepared and executed; and

Standard Form No: NPCMGNSF-INFR-12

Page 2 of 2

¹ currently based on GPPB Resolution No. 09-2020

- j. We understand that you are not bound to accept the Lowest Calculated Bid or any other Bid that you may receive.
- k. We likewise certify/confirm that the undersigned, is the duly authorized representative of the bidder, and granted full power and authority to do, execute and perform any and all acts necessary to participate, submit the bid, and to sign and execute the ensuing contract for the Name of Project of the National Power Corporation-Mindanao Generation.
- l. We acknowledge that failure to sign each and every page of this Bid Form, including the Bill of Quantities, shall be a ground for the rejection of our bid.

Name: _____

Legal Capacity: _____

Signature: _____

Duly authorized to sign the Bid for and behalf of: _____

Date: _____

BID DOCUMENTS

NAME OF PROJECT:

SECTION IX- CHECKLIST OF TECHNICAL &
FINANCIAL DOCUMENTS

PR NO./REF. NO.:

Standard Form Number: NPCMGENSF-INFR - 13

DETAILED COST ESTIMATE FORM

Name of Bidder :

Item No.	Item Description	Unit of Measure	Direct Cost		Equipment	Mark-Up		VAT	Unit Cost	Total Price
			Materials	Labor		OCM	Profit			

Designation

Name, Signature of Authorized Representative

Standard Form No: NPCMGNSF-INFR-14

SUMMARY SHEETS OF MATERIALS PRICES, LABOR RATES AND EQUIPMENT RENTAL RATES

Name of Bidder: _____

I. Unit Prices of Materials

Materials Description	Unit	Unit Price
-----------------------	------	------------

II. Manpower Hourly Rates

Designation	Rate/Hr.
-------------	----------

III. Equipment Hourly Rental Rates

Equipment Description	Rental Rate/Hr.
-----------------------	-----------------

Name, Signature of Authorized Representative

Designation

Performance Securing Declaration (Revised)

[if used as an alternative performance security but it is not required to be submitted with the Bid, as it shall be submitted within ten (10) days after receiving the Notice of Award]

REPUBLIC OF THE PHILIPPINES)
CITY OF _____) S.S.

PERFORMANCE SECURING DECLARATION

Invitation to Bid: [Insert Reference Number indicated in the Bidding Documents]

To: [Insert name and address of the Procuring Entity]

I/We, the undersigned, declare that:

1. I/We understand that, according to your conditions, to guarantee the faithful performance by the supplier/distributor/manufacturer/contractor/consultant of its obligations under the Contract, I/we shall submit a Performance Securing Declaration within a maximum period of ten (10) calendar days from the receipt of the Notice of Award prior to the signing of the Contract.
2. I/We accept that: I/we will be automatically disqualified from bidding for any procurement contract with any procuring entity for a period of one (1) year for the first offense, or two (2) years for the second offense, upon receipt of your Blacklisting Order if I/We have violated my/our obligations under the Contract;
3. I/We understand that this Performance Securing Declaration shall cease to be valid upon:
 - a. issuance by the Procuring Entity of the Certificate of Final Acceptance, subject to the following conditions:
 - i. Procuring Entity has no claims filed against the contract awardee;
 - ii. It has no claims for labor and materials filed against the contractor; and
 - iii. Other terms of the contract; or
 - b. replacement by the winning bidder of the submitted PSD with a performance security in any of the prescribed forms under Section 39.2 of the 2016 revised IRR of RA No. 9184 as required by the end-user.

IN WITNESS WHEREOF, I/We have hereunto set my/our hand/s this ____ day of [month] [year] at [place of execution].

*[Insert NAME OF BIDDER OR ITS
AUTHORIZED REPRESENTATIVE]
[Insert signatory's legal capacity]
Affiant*

[Jurat]

[Format shall be based on the latest Rules on Notarial Practice]

Contract Agreement Form for the Procurement of Infrastructure Projects (Revised)

[not required to be submitted with the Bid, but it shall be submitted within ten (10) days after receiving the Notice of Award]

CONTRACT AGREEMENT

THIS AGREEMENT, made this *[insert date]* day of *[insert month]*, *[insert year]* between *[name and address of PROCURING ENTITY]* (hereinafter called the "Entity") and *[name and address of Contractor]* (hereinafter called the "Contractor").

WHEREAS, the Entity is desirous that the Contractor execute *[name and identification number of contract]* (hereinafter called "the Works") and the Entity has accepted the Bid for *[contract price in words and figures in specified currency]* by the Contractor for the execution and completion of such Works and the remedying of any defects therein.

NOW THIS AGREEMENT WITNESSETH AS FOLLOWS:

1. In this Agreement, words and expressions shall have the same meanings as are respectively assigned to them in the Conditions of Contract hereinafter referred to.
2. The following documents as required by the 2016 revised Implementing Rules and Regulations of Republic Act No. 9184 shall be deemed to form and be read and construed as part of this Agreement, viz.:

- a. Philippine Bidding Documents (PBDs);
 - i. Drawings/Plans;
 - ii. Specifications;
 - iii. Bill of Quantities;
 - iv. General and Special Conditions of Contract;
 - v. Supplemental or Bid Bulletins, if any;
- b. Winning bidder's bid, including the Eligibility requirements, Technical and Financial Proposals, and all other documents or statements submitted;

Bid form, including all the documents/statements contained in the Bidder's bidding envelopes, as annexes, and all other documents submitted (e.g., Bidder's response to request for clarifications on the bid), including corrections to the bid, if any, resulting from the Procuring Entity's bid evaluation;

- c. Performance Security;
- d. Notice of Award of Contract and the Bidder's conforme thereto; and
- e. Other contract documents that may be required by existing laws and/or the Procuring Entity concerned in the PBDs. Winning bidder agrees that additional contract documents or information prescribed by the GPPB that are subsequently required for submission after the contract execution, such as the Notice to Proceed, Variation Orders, and Warranty Security, shall likewise form part of the Contract.

- 3. In consideration for the sum of *[total contract price in words and figures]* or such other sums as may be ascertained, *[Named of the bidder]* agrees to *[state the object of the contract]* in accordance with his/her/its Bid.
- 4. The *[Name of the procuring entity]* agrees to pay the above-mentioned sum in accordance with the terms of the Bidding.

IN WITNESS whereof the parties thereto have caused this Agreement to be executed the day and year first before written.

[Insert Name and Signature]

[Insert Name and Signature]

[Insert Signatory's Legal Capacity]

[Insert Signatory's Legal Capacity]

for:

for:

[Insert Procuring Entity]

[Insert Name of Supplier]

Acknowledgment

[Format shall be based on the latest Rules on Notarial Practice]

